

Report on the Educational Credit for Exceptional Needs Children (ECENC) Program

FY 2024-25

**Prepared by
Dr. Jenny May**

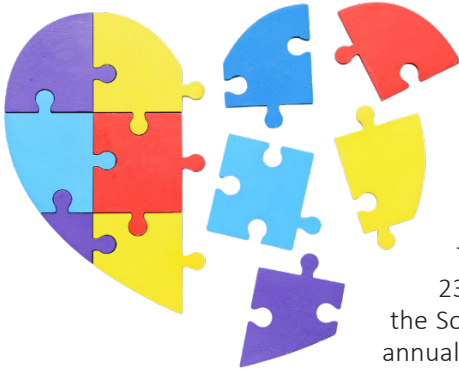


**SC EDUCATION
OVERSIGHT COMMITTEE**

Reporting facts. Measuring change. Promoting progress.



INTRODUCTION



This report is the seventh annual report on the impact of the Educational Credit for the Exceptional Needs Children program as required by Act 247 as amended on May 17th, 2021. The ECENC program provides grants and parental tax credits to students with exceptional needs attending private schools that meet specific eligibility requirements for approval by the Education Oversight Committee (EOC). Exceptional SC is a 501 (c) (3) that raises and accepts funds and reviews student grant applications for an ECENC funding. This evaluation was prepared using information and data from the state fiscal year 2022-23. Information utilized to complete this required evaluation was prepared and shared by the South Carolina Department of Revenue (SCDOR) and Exceptional SC. The law specifies that annually the EOC shall:

Issue a report to the General Assembly documenting the impact of the Educational Credit for Exceptional Needs Children Program on student achievement. In addition, the report must include information on individual schools if at least 51% of the total enrolled students in the private school participated in the Educational Credit for Exceptional Needs Children Program in the prior school year. The report must be according to each participating private school and for participating students, in which there are at least 30 participating students who have scores for tests administered. If the Education oversight committee determines that the 30 participating student cell size may be reduced without disclosing personally identifiable information of a participating student, the Education Oversight Committee may reduce the participating student cell size, but the cell size may not be reduced to less than 10 participating students. (Section 12-6-3790 (E) (6) of the SC Code of Laws).

This report seeks to provide the following about the ECENC program:

1. Information about the approval process, participation, and compliance for ECENC schools;
2. Information about the process for collecting assessment results used to document the impact of the ECENC program on student success; and,
3. Updates to previous recommendations from the EOC report;



| Term | Definition per Act 247 |
|-----------------------------------|--|
| ▶▶ Qualifying Student | A student who is an exceptional needs child is a South Carolina resident, and is eligible to be enrolled in a South Carolina secondary or elementary public school at the Kindergarten or later grade for the applicable school year. |
| ▶▶ Exceptional Needs Child | A child who has been evaluated in accordance with the state’s evaluation criteria as set forth in S.C. Code Ann. Regs 43-243.1, and determined eligible as a child with a disability who needs special education and related services, in accordance with the requirements of the Section 300.8 of the federal individuals with Disabilities Education Act. Or a child who has been diagnosed within the last three years by a licensed speech-language pathologist, psychiatrist, or medical, mental health, psychoeducational or other comparable licensed health care provider as having a neurodevelopmental disorder, a substantial sensory or physical impairment such as deaf, blind, or orthopedic disability, or some other disability or acute or chronic condition that significantly impeded the student’s ability to learn and succeed in school without specialized instructional and associated supports and services tailored to the child’s unique needs. |

ECENC Process, Participation and Compliance

Process

The law defines qualifying students and eligible schools. Grants may be awarded to students in an amount not exceeding \$11,000 or the annual cost of tuition, whichever is less, to a qualifying student at an eligible school. A qualifying student receiving a grant may not be charged tuition by an eligible school in an amount greater than the student would be charged if the student was not a qualifying student.

The EOC approves and posts a list of eligible schools on its website. The [eligible schools](#) approved in school year 2024-25 can be found in Appendix A. These eligible schools must apply with documentation that they meet the following criteria:

- Independent school, including those religious in nature, other than public schools, that offer a general education to primary or secondary school students;
- Does not discriminate on the basis of race, color, or national origin;
- Is located in South Carolina;
- Has an educational curriculum that includes courses set forth in the state’s diploma requirements, graduation certificate requirements for special needs children, and where the students attending are administered national achievement or state standardized tests, or both at progressive grade levels to determine student progress;
- Has school facilities that are subject to applicable federal, state, and local laws;
- Is a member in good standing of the Southern Association of Colleges and Schools, the South Carolina Association of Christian Schools, the South Carolina Independent School Association, or Palmetto Association of Independent Schools; and
- Provides a specially designed program or learning resource center to provide needed accommodations based on the needs of exceptional needs students provides onsite educational services or supports to meet the needs of exceptional needs students or is a school specifically existing to meet the needs of only exceptional needs students with documented disabilities.

An application form to apply to be an ECENC approved school for the 2026-27 school year and the current ECENC Manual can be found in Appendices B and C respectively.

ECENC School Approval Timeline

The following process and timeline were used by the EOC to determine school eligibility in the ECENC program for fiscal year 2024-25. Each school, new or recurring, was required to comply with the same program standards and reporting requirements.

January 2, 2025

1. Notification sent by email to schools currently in good standing with the ECENC program in the 2023-24 school year that the application process is open. The Application to Participate in the ECENC program was made available on the EOC's website with direct links to the ECENC manual that was designed to guide applicants through the process. All documents must be completed, signed, attached and returned to EOC staff.
2. The completed application of schools meeting the standards and reporting requirements for SY 2023-24 were also published on the EOC website.

February 28, 2025

1. The Application to Participate and Document A – Statement of Services was required to be submitted to EOC staff by February 28, 2025 to be approved for participation in the program for the FY 2024-25.

EOC staff called programs that have previously participated to remind them of the legislative due date so that they may submit required documents and continue to be eligible in the program and the students they serve approved by Exceptional SC can access this grant. This step in the process is not legislatively required, however does support students and families should there be an oversight by the participating schools that miss the annual email notification these requirements are due.
2. The EOC publishes a list of schools meeting the standards and reporting requirements for approval to participate in the program for the FY 25.

June 30, 2025

1. Document B which describes grants received must be completed, signed, and returned to EOC staff by June 30, 2025. This document must contain information on the number of students (K-12) who were enrolled in the school in the 2024-25 school year and information on the number and amount of grants received in 2024-25. No personally identifiable information of students may be submitted.

September 1, 2025

1. Document C – School level assessment results must be provided directly to the EOC with the name of each national achievement test administered and the scale scores/percentile rankings/stanines/grade level equivalents for ELA (Reading) and Mathematics. This information must be reported by grade level for classes with 10 or more students of all grades tested and attached by September 1, 2025. No personally identifiable information of students or teachers may be reported in this submission.
2. Document C – Information on staff responsible for the submission of school level assessment results must be provided to the EOC staff by September 1, 2025. Document C must be signed and returned at this time.

November 15, 2025

1. A "copy compilation, review, or compliance audit of the organization's financial statements as relating to the grants received, conducted by a certified public accounting firm" must be received by the EOC no later than November 15, 2025. No personally identifiable information of students should be submitted.

Approved and Participating Schools:

Schools approved by the EOC to participate in the ECENC program in 2024-25 can be found in each of the five Center for Educator Recruitment, Retention and Advancement (CERRA) regions of South Carolina.

The **Upstate**, Region 1, has 34 approved schools and serves the most student recipients with 619 students receiving a total of \$2,968,728 in grants, for an average grant amount of \$4,796 per student.

The **Savannah River Basin**, Region 2, has five approved schools and 61 student recipients receiving a total of \$218,800. The average student grant in Region 2 is \$3,587.

The **Midlands** make up CERRA Region 3, where 21 approved schools serve 236 grant funded students receiving a total of \$1,174,360. The average grant for a student in the Midlands is \$4,976.

Sixteen approved schools are located in CERRA Region 4, the **Pee Dee**, and serve 48 grant funded students receiving a total of \$124,400, or an average of \$2,592 per student.

The **Lowcountry** makes up CERRA region 5 and has 40 approved schools. Approved schools in the Lowcountry serve 370 grant funded students with an average grant of \$3,671, for a total of \$1,358,637. There were 26 approved ECENC schools across all five CERRA regions that did not receive any grants from the program. In total, \$5,844,924 in ECENC funds were dispersed to 1,334 recipients across 90 schools in South Carolina.

The total amount of grants spent in ECENC approved schools in 2024-25 decreased for the 2025-26 funding year by \$2,587,447. Between 2024-25 and 2025-26 the number of grants awarded has increased by 95. During the same time, the number of approved schools statewide has remained constant, thereby the average amount per student has decreased by \$2,108. Each student accepted was awarded 13% of their tuition which varies by school. Most recently available data shows that 1,425 students used a total of \$3,246,278 across 96 approved schools, the average scholarship amount being \$2,278.

Upstate

30 approved schools
630 grants
\$1,577,641 ECENC funds total
\$2,504 average grant amount

Midlands

23 approved schools
311 grants
\$755,500 ECENC funds total
\$2,429 average grant amount

Savannah River

5 approved schools
59 grants
\$104,800 ECENC funds total
\$1,776 average grant amount

Pee Dee

15 approved schools
59 grants
\$74,000 ECENC funds total
\$1,254 average grant amount

Lowcountry

43 approved schools
366 grants
\$734,337 ECENC funds total
\$2,006 average grant amount

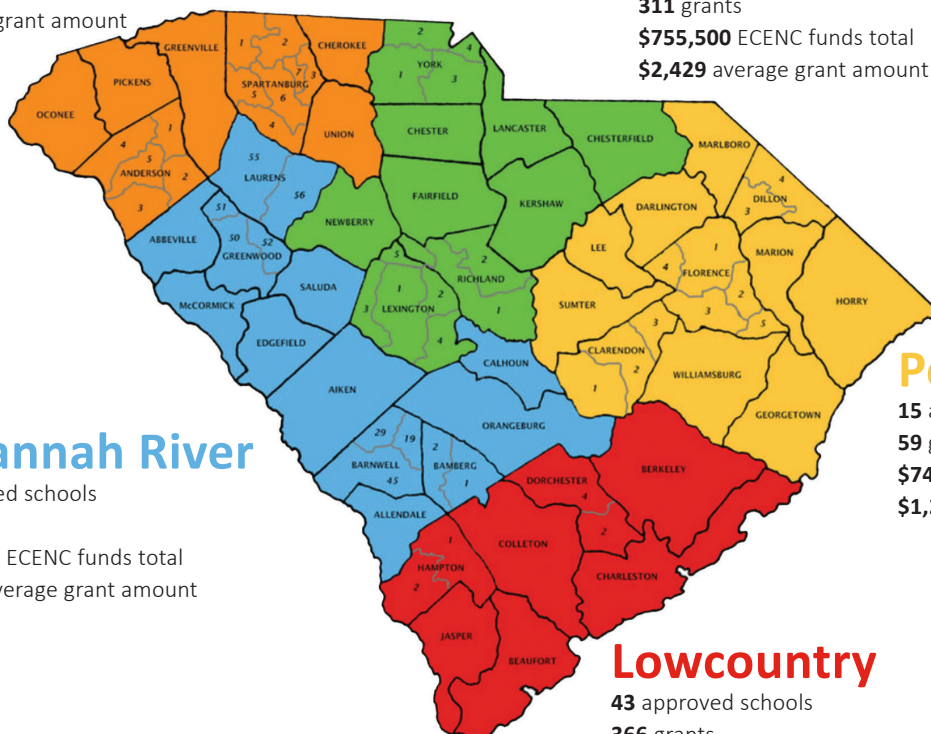


Table 1: ECENC Funding and Grants 2024-25 through 2025-26:

| Region | Approved Schools | | Grants | | Total Amount Funded | | Average Amount per Student | |
|-------------------------------------|------------------|------------|--------------|--------------|---------------------|--------------------|----------------------------|----------------|
| | 2024-25 | 2025-26 | 2024-25 | 2025-26 | 2024-25 | 2025-26 | 2024-25 | 2025-26 |
| Region 1 Upstate | 34 | 30 | 643 | 630 | \$3,024,928 | \$1,577,641 | \$4,704 | \$2,504 |
| Region 2 Savannah River Basin | 9 | 5 | 69 | 59 | \$240,300 | \$104,800 | \$3,482 | \$1,776 |
| Region 3 Midlands | 19 | 23 | 233 | 311 | \$1,163,760 | \$755,500 | \$4,995 | \$2,429 |
| Region 4 Pee Dee | 15 | 15 | 52 | 59 | \$131,600 | \$74,000 | \$2,531 | \$1,254 |
| Region 5 Lowcountry | 39 | 43 | 333 | 366 | \$1,273,137 | \$734,337 | \$3,823 | \$2,006 |
| State Total | 116 | 116 | 1,330 | 1,425 | \$5,833,725 | \$3,246,278 | \$4,386 | \$2,278 |

Accrediting Associations:

Each ECENC approved school is accredited by at least one of the following independent accrediting associations for private schools and remained in good standing during the time of approval. The independent accrediting associations accepted by the ECENC program include:

- South Carolina Independent School Association (SCISA) accredits 66 ECENC approved schools.
- Southern Association of Colleges and Schools (SACS) accredits 63 ECENC approved schools.
- South Carolina Association of Christian Schools (SCACS) accredits 18 ECENC approved schools.
- Palmetto Association of Independent School Accreditation (PAIS) accredits 16 ECENC approved schools.

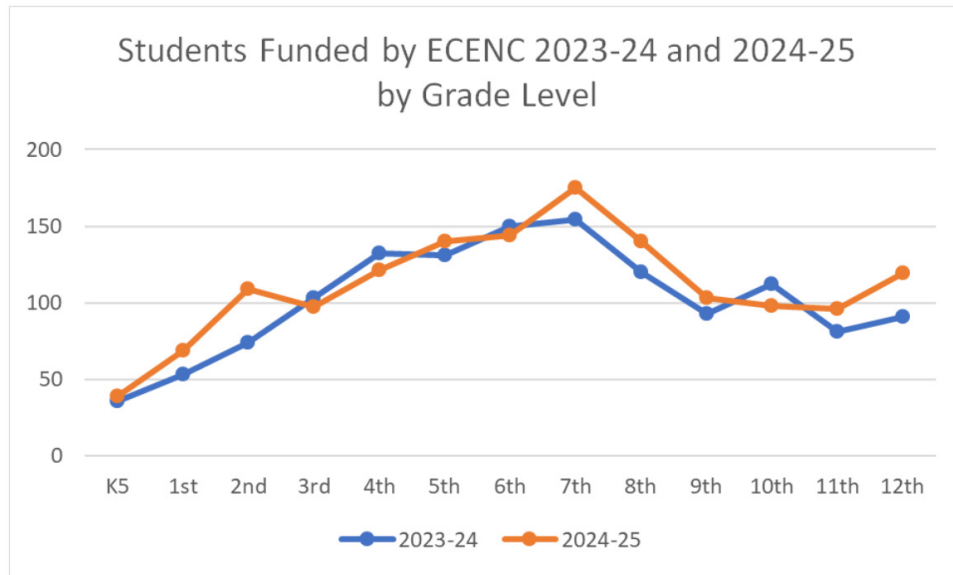
Table 2: Accrediting Associations by CERRA Region, Fiscal Year 2024-25

| CERRA Region | SCISA | SACS | SCACS | PAIS |
|-------------------------------------|-----------|-----------|-----------|-----------|
| Region 1 Upstate | 15 | 16 | 6 | 3 |
| Region 2 Savannah River Basin | 3 | 3 | 0 | 0 |
| Region 3 Midlands | 9 | 10 | 8 | 4 |
| Region 4 Pee Dee | 11 | 3 | 3 | 1 |
| Region 5 Lowcountry | 28 | 31 | 1 | 8 |
| Total | 66 | 63 | 18 | 16 |

*Data from approved ECENC school applications for FY 2023-24

Student Participation:

According to Exceptional SC total of 1,450 students participated in the ECENC program in 2024-25. Data from SC Department of Revenue shows that approximately 64% of the scholarship recipients are from households earning more than \$100,000 annually. Approximately 36% of ECENC recipients are from households earning less than \$100,000 annually. These percentages remain consistent over time. Of families participating in ECENC earning less than \$100,000 per year, 12% earn less than \$50,000, and 24% are earning \$50,000 through \$100,000. This data has been collected from the Department of Revenue and the full report published January.



Data provided by Exceptional SC over the past two years.

Exceptional SC provided data on students rising Kindergarten through grade 12 who applied for and those who received an ECENC grant during the 2024-25 school year. Table 3 shows this data and indicates if that number is more or less than the previous school year. In the 2024-25 school year 98% of students applying received grants, and those who did not we found ineligible to receive them. During the 2023-24 school year, students were funded at 27%, and during the 2024-25 school year this amount was 13% of tuition and on average about \$2,000 less than in the previous year. Exceptional SC reports that this fluctuation is the result of variance of donations across school years.

Table 3: Percentage of Students Funded 2024-25 by Grade Level

| Grade | Funded | Applied | % Funded |
|-------|--------|---------|----------|
| K5 | 39 | 42 | 93% |
| 1st | 69 | 69 | 100% |
| 2nd | 109 | 123 | 89% |
| 3rd | 97 | 97 | 100% |
| 4th | 121 | 121 | 100% |
| 5th | 140 | 145 | 97% |
| 6th | 144 | 144 | 100% |
| 7th | 175 | 175 | 100% |
| 8th | 140 | 143 | 98% |
| 9th | 103 | 105 | 98% |
| 10th | 98 | 98 | 100% |
| 11th | 96 | 96 | 100% |
| 12th | 119 | 119 | 100% |
| Total | 1,450 | 1,477 | 98% |

Student Grants and Funding:

Act 247 states that student grants may not exceed eleven thousand dollars or the amount of tuition, whichever is less. The Exceptional SC Board for the 2023-24 year funded all incumbent students who applied for the grant up to 27% of the total tuition which was \$9000. This grant was given at the funding percentage of 27% in a one-time payment made in the spring. Families who applied for the parental tax credit but not a grant could receive up to \$11,000. A family who did apply for the grant and a parental tax credit, the maximum amount the family could receive was \$11,000 total so the grant had to be deducted from the tax credit. While \$11,000 is the maximum a family could receive, the amount given is typically less and determined by the Exceptional SC Board. In the 2024-25 school year students were funded at 13% the tuition rate, which is lower than the previous year. Applications in Table 3 reflect both applications and grants for the who applied for parental tax credits whether a grant application was also submitted.

Compliance: Assessments and the Impact on Student Success:

In evaluating the impact of the ECENC program on student achievement and academic growth, there are challenges due to a lack of student level data and comparable assessments administered. ECENC schools are not required to provide individual student test scores for students who received an ECENC grant; compliance is monitored by receipt of aggregate scores from approved schools and information about what assessments are given to all students in the school. All approved schools administered assessments and maintained compliance; however, there is a lack of student level data to make comparisons or determine whether students have experienced measurable improvements as a result of the ECENC program.

Approved schools do offer standardized or criterion referenced assessments as a condition of participation and these can be found in Appendix E. Private and independent schools that administer national assessments typically select an

assessment or assessments that measure English and Language Arts (ELA) and Math competencies at a minimum. Examples of these assessments include Measures of Academic Progress (MAP), and the Iowa Test of Basic Skills (ITBS). The most used nationally normed assessments that ECENC approved schools administered in the 2023-24 school year include PSAT, SAT, ACT, MAP and ITBS which is similar to previous years.

Act 247 requires an evaluation of the ECENC program's impact on student achievement where a majority (51% or more) of students enrolled in a school received a grant from Exceptional SC. There are nine of these schools this year, as there were the past two reporting years. These schools (referred to in Table 3) are in the Upstate and the Midlands. Each of the schools with 51% or more of the total enrollment accessing ECENC dollars is identified as serving students with diagnosed disabilities or academic struggles. Appendix F contains more detailed data, including assessment information for schools with 51% or more of the total enrollment participating in the ECENC program. In accordance with Act 247, assessment information for fewer than 10 students is not shared to protect student privacy.

| School | Accrediting Body | CERRA Region | Percentage of Students Funded through ECENC | Total Amount | Assessment |
|----------------------------------|------------------|--------------|---|--------------|--|
| Camperdown Academy | SCISA | 1 | 78% | \$496,000.00 | GMADE |
| Glenforest School | SCISA | 3 | 59% | \$99,400.00 | Fast Bridge, PSAT, ACT, SAT, SRA Mastery |
| Hidden Treasure Christian School | SCACS | 1 | 74% | \$125,240.85 | Woodcock-Johnson IV |
| Hope Christian Academy | SCACS | 3 | 73% | \$16,800.00 | Woodcock-Johnson IV |
| Sandhills School | SCISA/PAIS | 3 | 83% | \$332,200.00 | Woodcock-Johnson IV, PACT |
| The Chandler School | SCISA | 1 | 78% | \$132,100.00 | Stanford 10, OLSAT, |
| Trailhead Community Farm School | SACS | 1 | 62% | \$20,800.00 | MAP |
| Trident Academy | SCISA/SACS/PAIS | 5 | 70% | \$357,800.00 | Gates MacGinitie, WRAT |

*WRAT is the Wide Range Achievement Test. OLSAT is the Otis-Lennon School Ability Test. SRA is the Scholastic Reading Assessment. GMADE is the Group Mathematics Assessment and Diagnostic Evaluation.

Recommendations:

While some recommendations remain consistent from previous reports, several updates and new recommendations are relevant to the evaluation of the ECENC program.

Convene the Advisory Committee of the ECENC:

Last year's report recommended that EOC staff convene the advisory committee of the ECENC in accordance with Act 247 to:

1. Consult with the EOC concerning requests for exemptions from the curriculum requirements
2. Provide recommendations on matters requested by the EOC

The Advisory Committee met last year and staff drafted processes for how the committee will work together. It remains the recommendation of staff that the advisory committee continue to work together in accordance with Act 247, with the stated goals of:

1. Confirming processes for communication and collaboration on ECENC work
2. Advise EOC staff on a process to consider school approval when there is a special circumstance or a discrepancy about services offered
3. Consider a process for complaints by parents and if or how these complaints might impact school approval.

This advisory committee, Department of Education, EOC and/or the Department of Revenue may not regulate educational programs of an independent school that accepts students receiving scholarship grants pursuant to Act 247. EOC staff does approve schools using reported information, and should reports conflict with the application material staff needs a process to follow so that all eligible schools are approved and the process maintains integrity for families utilizing the program. It is recommended that the advisory committee advise on a process.

The advisory board is comprised of leaders in the disability community, participating private school leadership, accrediting organizations, and parents.

| Member | Organization |
|--------------------|-----------------------|
| Robbie Bracisewski | SCISA |
| Kimberly Tissot | Able SC |
| Amy Holbert | Family Connections SC |
| Patricia Parrish | SACSCOC |
| Ramsay Bokinsky | Sandhills School |
| Edward Earwood | SCACS |
| Matt Palyok | Parent |

Offer Summative State Assessments to ECENC Students in Public Schools:

South Carolina students in private schools are not currently offered the opportunity to participate in South Carolina State Assessments. Examples of these assessments include SC-READY, and End of Course (EOC) examinations. In previous reports this has been noted, and a survey collected showed some schools would be interested in the opportunity to offer South Carolina State Assessments. It is recommended that an additional data regarding schools interested in specific assessments be collected and collaboration determine if ECENC participating schools can be included in future training for assessment administration.

Consider Clarity for Parents Between ESTF and ECENC Participation:

The Educational Scholarship Trust Fund (ESTF) is entering its third year of implementation and similar to the previous years of implementation, the ECENC funds cannot be used in conjunction with ESTF funds. It is recommended that either safeguards to separate and ensure parents cannot be granted both funds occur at the state level, or that funding from these two programs be allowed to be braided. It is the continued recommendation of the EOC to: 1. Remain informed about the implementation of the ESTF, and 2. Monitor the need for focused communication about each of these separate programs. If additional communication is needed, develop this in collaboration with SCDE and other partners.

Next Steps:

The next steps for continued evaluation of the ECENC program include: convene the advisory committee for the purposes of clarifying work process and recommended steps for incongruent application information. Questions can be directed to EOC staff. The phone number is 803-734-6148 and additional resources can be found at www.eoc.sc.gov

The SC Education Oversight Committee is an independent, non-partisan group made up of 18 educators, business persons, and elected leaders. Created in 1998, the committee is dedicated to reporting facts, measuring change and promoting progress within South Carolina's education system.

Appendices

Appendix A: Approved Schools FY 2025

Educational Credit for Exceptional Needs Children's Fund (ECENC) - Act 247

As of Monday, December 29, 2025

| SCHOOL | ADDRESS | TELEPHONE | WEBSITE ADDRESS |
|---------------------------------------|--|--------------|---|
| Addlestone Hebrew Academy | 1639 Wallenberg Boulevard Charleston, SC 29407 | 843.571.1105 | http://addlestone.org/ |
| All Saints' Episcopal Day School | 1425 Cherokee Road Florence, SC 29501 | 843.662.8134 | https://www.aseds.com/ |
| Amen Always Community Academy | 21 Roseborough Road Lugoff, SC 29078 | 803.871.3418 | https://amenalwaysca.org/ |
| Anderson Christian School | 3902 Liberty Highway Anderson, SC 29621 | 864.224.7309 | http://www.andersonchristian.com/ |
| Ashley Hall | 172 Rutledge Avenue Charleston, SC 29403 | 843.722.4088 | http://www.ashleyhall.org/ |
| Beaufort Academy | 240 Sams Point Road Beaufort, SC 29907 | 843-524-3393 | http://www.beaufortacademy.org/ |
| Ben Lippen School | 7401 Monticello Road Columbia, SC 29203 | 803.786.7200 | http://www.benlippen.com/ |
| BEST Skills Academy | 28 Bolt Street Greenville, SC 29605 | 864.977.1285 | https://best-skills.org/ |
| Bishop England High School | 363 Seven Farms Drive Charleston, SC 29492 | 843.849.9599 | http://www.behs.com/ |
| Blessed Sacrament School | 7 Saint Teresa Drive Charleston, SC 29407-7243 | 843.766.2128 | https://www.scbss.org/ |
| Bob Jones Academy | 1700 Wade Hampton Boulevard Greenville, SC 29614 | 864.770.1395 | www.bobjonesacademy.net |
| Calhoun Academy | 81 Academy Road St. Matthews, SC 29135 | 803.874.2734 | https://www.calhounacademy.org/ |
| Calvary Christian School-Greer | 101 Calvary Street Greer, SC 29650 | 864.877.5555 | http://www.calvarychristiangreer.org/ |
| Calvary Christian School-Myrtle Beach | 4511 Dick Pond Road Myrtle Beach, SC 29588 | 843.650.2829 | http://ccsmb.com/ |

Each school has completed an Application to Participate in the Educational Credit for Exceptional Needs Children (ECENC) program for school year 2025-26. Each school meets the program standards of Act 247 of 2018. Each school must comply with the Reporting Requirements of Act 247 of 2018 during school year 2025-26, and failure to submit the required reporting information will result in the school's removal from the ECENC program.

As of Monday, December 29, 2025

Educational Credit for Exceptional Needs Children's Fund (ECENC) - Act 247

As of Monday, December 29, 2025

| SCHOOL | ADDRESS | TELEPHONE | WEBSITE ADDRESS |
|--|---|--------------|---|
| Camden Military Academy | 520 Highway 1 North Camden, SC 29020 | 800.948.6291 | http://camdenmilitary.com |
| Camperdown Academy | 65 Verdae Commons Drive Greenville, SC 29607 | 864.244.8899 | http://camperdown.org |
| Cardinal Newman School | 2945 Alpine Road Columbia SC 29223 | 803.782.2814 | www.cnhs.org |
| Carolina Christian Academy | 1850 Kershaw Camden Hwy Lancaster, SC 29720 | 803.285.5565 | https://carolinachristian.org/ |
| Charleston Collegiate School | 2024 Academy Road John's Island, SC 29455 | 843.559.5506 | http://www.charlestoncollegiate.org/index.html |
| Charleston Day School | 15 Archdale Street Charleston, SC 29401 | 843.377.0315 | http://www.charlestdayschool.org |
| Cherokee Creek Boys School, Inc. | 198 Cooper Road Westminster, SC 29693 | 864.647.1885 | http://cherokeecreek.net/ |
| Christ Church Episcopal School | 245 Cavalier Drive Greenville, SC 29607 | 864.331.4225 | http://www.cces.org |
| Christ Our King-Stella Maris Catholic School | 1183 Russell Drive Mount Pleasant, SC 29464 | 843.884.4721 | http://www.coksm.org/ |
| Christian Academy of Myrtle Beach | 291 Ronald McNair Blvd Myrtle Beach, SC 29579 | 843.236.6222 | https://www.christianacademysaints.org/ |
| Clarendon Hall School | 1140 South Duke Street P.O. Box 609 Summerton, SC 29148 | 803.485.3550 | https://clarendonhall.org/ |
| Coastal Christian Preparatory School | 681 McCants Drive Mt. Pleasant, SC 29464 | 843.884.3663 | https://coastalchristian.org/ |
| Colleton Preparatory Academy | 165 Academy Road P.O. Box 1426 Walterboro, SC 29488 | 843.538.8989 | http://www.colletonprep.org/index.html |
| Cross Schools, Inc. | 495 Buckwalter Parkway Bluffton, SC 29910 | 843.706.2000 | https://www.crossschools.org/ |

Each school has completed an Application to Participate in the Educational Credit for Exceptional Needs Children (ECENC) program for school year 2025-26. Each school meets the program standards of Act 247 of 2018. Each school must comply with the Reporting Requirements of Act 247 of 2018 during school year 2025-26, and failure to submit the required reporting information will result in the school's removal from the ECENC program.

As of Monday, December 29, 2025

Educational Credit for Exceptional Needs Children's Fund (ECENC) - Act 247

As of Monday, December 29, 2025

| SCHOOL | ADDRESS | TELEPHONE | WEBSITE ADDRESS |
|-------------------------------------|---|--------------|---|
| Crown Leadership Academy | 1455 Wakendaw Road Mt. Pleasant, SC 29464 | 843.425.2414 | https://www.crownleadershipacademy.org/ |
| Cutler Jewish Day School | 5827 A North Trenholm Road Columbia, SC 29206 | 803.782.1831 | www.cjdssc.com |
| Divine Redeemer Catholic School | 1104 Fort Drive Hanahan, SC 29406 | 843 553 1521 | www.divineredeemerschool.com |
| Dorchester Academy | 234 Academy Road St. George, SC 29477 | 843.563.9511 | https://www.dorchesteracademy.org/ |
| First Presbyterian Academy, Inc. | 829 Garlington Road Greenville, SC 29615 | 864.678.5107 | http://www.shannonforest.com/ |
| Five Oaks Academy | 1101 Jonesville Road Simpsonville, SC 29681 | 864-228-1881 | http://www.fiveoaksacademy.com/ |
| Glenforest School | 1041 Harbor Drive West Columbia, SC 29169 | 803.796.7622 | www.Glenforest.org |
| Grace Christian School | 416 Denham Ave. West Columbia, SC 29169 | 803.794.8996 | https://www.gracelions.com/ |
| Grace Community Academy of Columbia | 577 W. Killian Road Columbia, SC 29203 | 803.679.6423 | https://www.gcacademysc.org/ |
| Greenville Classical Academy | 2519 Woodruff Road Simpsonville, SC 29681 | 864.329.9884 | https://greenvilleclassical.com/ |
| Hammond School | 854 Galway Lane Columbia, SC 29209 | 803.776.0295 | http://www.hammondschool.org/Home |
| Hampton Park Christian School | 875 State Park Road Greenville, SC 29609 | 864.233.0556 | http://www.hpcsonline.org/hpcs |
| Harvest Community School | PO Box 21 (10 South Dukes Street) Summerton, SC 29148 | 803.574.1004 | http://www.harvestcommunityschool.org/ |
| Hawthorne Christian Academy | PO Box 801 790 Hawthorne Road Chester, SC 29706 | 803.377.8235 | https://www.enrollathca.org/ |

Each school has completed an Application to Participate in the Educational Credit for Exceptional Needs Children (ECENC) program for school year 2025-26. Each school meets the program standards of Act 247 of 2018. Each school must comply with the Reporting Requirements of Act 247 of 2018 during school year 2025-26, and failure to submit the required reporting information will result in the school's removal from the ECENC program.

As of Monday, December 29, 2025

Educational Credit for Exceptional Needs Children's Fund (ECENC) - Act 247

As of Monday, December 29, 2025

| SCHOOL | ADDRESS | TELEPHONE | WEBSITE ADDRESS |
|----------------------------------|---|--------------|---|
| Heathwood Hall Episcopal School | 3000 South Beltline Blvd Columbia, SC 29201 | 803-765-2309 | www.heathwood.org |
| Hidden Treasure Christian School | 500 West Lee Road Taylors, SC 29687 | 864.235.6848 | www.hiddentreasure.org |
| Hilton Head Christian Academy | 55 Gardner Drive Hilton Head Island, SC 29926 | 843.681.2878 | http://www.hhca.org/ |
| Hilton Head Preparatory School | 8 Fox Grape Road Hilton Head Island, SC 29928 | 843.671.2286 | https://www.hhprep.org/ |
| Holy Trinity Catholic School | 1760 Living Stones Lane Longs, SC 29568-7486 | 843.390.4108 | http://www.htcatholicsschoolmyrtlebeach.com |
| HOPE Academy | PMB 358, Suite 2100 2131 Woodruff Road Greenville, SC 29607 | 864.676.0028 | http://www.projecthopesc.org/ |
| Hope Christian Academy | 545 Alexander Circle Columbia, SC 29206 | 803.790.4028 | https://www.hcatoday.org/ |
| James Island Christian School | 15 Crosscreek Drive Charleston, SC 29412 | 843.795.1762 | http://www.jics.org/ |
| John Paul II Catholic School | 4211 N. Okatie Highway Ridgeland, SC 29936 | 843.645.3838 | www.johnpaul2school.org |
| Lee Academy | 630 Cousar Street Bishopville, SC 29505 | 803.484.5532 | https://www.myleeacademy.org/ |
| Lowcountry Preparatory School | 300 Blue Stem Drive Pawleys Island, SC 29585 | 843.237.4147 | https://lowcountryprep.org/ |
| Mason Preparatory School | 56 Halsey Boulevard Charleston, SC 29401 | 843.723.0664 | https://www.masonprep.org/ |
| Mead Hall Episcopal School | 619 Barnwell Avenue. NW Aiken, SC 29801 | 803.648.3223 | http://www.meadhallschool.org |
| Midway Christian Academy | 12984 Hwy 55 W York, SC 29745 | 803.222.2929 | https://www.midwaychristianacademy.org/ |

Each school has completed an Application to Participate in the Educational Credit for Exceptional Needs Children (ECENC) program for school year 2025-26. Each school meets the program standards of Act 247 of 2018. Each school must comply with the Reporting Requirements of Act 247 of 2018 during school year 2025-26, and failure to submit the required reporting information will result in the school's removal from the ECENC program.

As of Monday, December 29, 2025

Educational Credit for Exceptional Needs Children's Fund (ECENC) - Act 247

As of Monday, December 29, 2025

| SCHOOL | ADDRESS | TELEPHONE | WEBSITE ADDRESS |
|---|--|--------------|---|
| Miracle Academy Preparatory School | 1019 Bethel Road Russellville, SC 29476 | 843.567.4644 | http://www.miracleacademy.org/home.html |
| Mitchell Road Christian Academy | 207 Mitchell Road Greenville, SC 29615 | 864.268.2210 | http://www.mitchellroadchristian.org |
| Montessori School of Anderson | 280 Sam McGee Road Anderson, SC 29621 | 864.226.5344 | http://msasc.org/ |
| Montessori School of Florence | 510 W. Palmetto Street Florence, SC 29501 | 843.629.2920 | https://florencemontessori.org/ |
| Nativity Catholic School | 1125 Pittsford Circle Charleston, SC 29412 | 843.795.3975 | http://www.nativity-school.com/ |
| Newberry Academy | 2055 Smith Road Newberry, SC 29108 | 803.276.2760 | https://newberryacademy.com/ |
| Northside Christian Academy | 4347 Sunset Boulevard Lexington, SC 29072 | 803.520.5656 | http://northsidechristianacademy.org/ |
| Oakbrook Preparatory School | 190 Lincoln School Road Spartanburg, SC 29301 | 864.587.2060 | http://www.oakbrookprep.org/ |
| Oconee Christian Academy | 150 His Way Circle Seneca, SC 29672 | 864-882-6925 | http://www.oconeechristian.org/ |
| Orangeburg Preparatory Schools, Inc. | 2651 North Road, NW Orangeburg, SC 29118 | 803.534.7970 | http://orangeburgprep.com/index.html |
| Our Lady of Peace Catholic School | 856 Old Edgefield Road N Augusta, SC 29841 | 803.279.8396 | http://www.olpschool.us/ |
| Our Lady of the Rosary Catholic School | 2 James Drive Greenville, SC 29605-2209 | 864.277.5350 | www.olrschool.net |
| Palmetto Christian Academy-Mt. Pleasant | 361 Egypt Road Mt. Pleasant, SC 29464 | 843-881-9967 | www.palmettochristianacademy.org |
| Patrick Henry Academy | 8766 Savannah Hwy. Estill, SC 29918 | 803.625.2440 | http://www.patrickhenryacademy.org/ |

Each school has completed an Application to Participate in the Educational Credit for Exceptional Needs Children (ECENC) program for school year 2025-26. Each school meets the program standards of Act 247 of 2018. Each school must comply with the Reporting Requirements of Act 247 of 2018 during school year 2025-26, and failure to submit the required reporting information will result in the school's removal from the ECENC program.

As of Monday, December 29, 2025

Educational Credit for Exceptional Needs Children's Fund (ECENC) - Act 247

As of Monday, December 29, 2025

| SCHOOL | ADDRESS | TELEPHONE | WEBSITE ADDRESS |
|--|---|--------------|---|
| Pee Dee Academy | 2903 E. Highway 76 E P.O. Box 449 Mullins, SC 29574 | 843.423.1771 | http://www.peedeeacademy.org/ |
| Porter-Gaud School | 300 Albemarle Road Charleston, SC 29407 | 843.556.3620 | https://www.portergaud.edu/ |
| Prince of Peace Catholic School | 1209 Brushy Creek Road Taylors, SC 29687 | 864.331.2145 | www.popcatholicsschool.org |
| Providence Classical School of Rock Hill | 318 N Jones Avenue Rock Hill, SC 29730-3800 | 803.900.9582 | https://www.providenceclassicalrockhill.com/ |
| Sandhills School | 1500 Hallbrook Drive Columbia, SC 29209 | 803.695.1400 | http://www.sandhillsschool.org |
| Southside Christian School | 2211 Woodruff Road Simpsonville, SC 29681 | 864.234.7575 | http://www.southsidechristian.org |
| Spartanburg Christian Academy | 8740 Asheville Highway Spartanburg, SC 29316 | 864-578-4238 | www.scawarriors.org |
| Spartanburg Day School | 1701 Skylyn Drive Spartanburg, SC 29307 | 864.582.7539 | http://www.spartanburgdayschool.org/ |
| St. Andrew Catholic School | 3601 N Kings Highway Myrtle Beach, SC 29577-2933 | 843.448.6062 | www.standrewschoolmb.com |
| St. Anne Catholic School-Rock Hill | 1698 Bird Street Rock Hill, SC 29730-3800 | 803.324.4814 | http://www.stanneschool.com/wp/ |
| St. Anthony Catholic School-Florence | 2536 W. Hoffmeyer Road Florence, SC 29501 | 843.662.1910 | www.saintanthonycatholic.com |
| St. Anthony of Padua Catholic School | 311 Gower Street Greenville, SC 29611 | 864.271.0167 | www.stanthonygreenvillesc.org |
| St. Elizabeth Ann Seton Catholic High School | 1300 Carolina Forest Blvd Myrtle Beach, SC 29579 | 843.903.1400 | http://www.setonhighschoolsc.org/ |
| St. Francis by the Sea Catholic School | 45 Beach City Road Hilton Head Island, SC 29926 | 843.681.6501 | www.sfcshhi.com |

Each school has completed an Application to Participate in the Educational Credit for Exceptional Needs Children (ECENC) program for school year 2025-26. Each school meets the program standards of Act 247 of 2018. Each school must comply with the Reporting Requirements of Act 247 of 2018 during school year 2025-26, and failure to submit the required reporting information will result in the school's removal from the ECENC program.

As of Monday, December 29, 2025

Educational Credit for Exceptional Needs Children's Fund (ECENC) - Act 247

As of Monday, December 29, 2025

| SCHOOL | ADDRESS | TELEPHONE | WEBSITE ADDRESS |
|---|--|--------------|---|
| St. Gregory the Great Catholic School | 323 Fording Island Road Bluffton, SC 29909-6134 | 843.815.9988 | www.sgg.cc |
| St. John Catholic School-Charleston | 3921 St. John Ave N. Charleston, SC 29405 | 843.744.3901 | http://saintjohncatholicsc.org/schoolsite/index.php |
| St. John Neumann Catholic School | 721 Polo Road Columbia, SC 29223 | 803.788.1367 | http://www.sjncatholic.com |
| St. John's Christian Academy | 204 W. Main Street Moncks Corner, SC 29461 | 843.761.8539 | http://www.sjacavaliers.com/ |
| St. Joseph Catholic School-Anderson | 1200 Cornelia Road Anderson, SC 29621-3349 | 864.760.1619 | http://www.stjosephofanderson.com/ |
| St. Joseph Catholic School-Columbia | 3700 Devine Street Columbia, SC 29205-1908 | 803.254.6736 | http://www.stjosdevine.com/ |
| St. Joseph's Catholic School-Greenville | 100 St Joseph's Drive Greenville, SC 29607 | 864.234.9009 | www.sj catholic school.org |
| St. Martin de Porres Catholic School | 2225 Hampton Street Columbia, SC 29204 | 803.254.5477 | http://www.saintmartindepores.net/index.html |
| St. Mary Help of Christians Catholic School | 118 York Street, SE Aiken, SC 29801 | 803.649.2071 | www.stmaryschoolaiken.com |
| St. Michael Catholic School | 542 Cypress Avenue Murrells Inlet, SC 29576-8739 | 843.651.6795 | http://www.saintmichaelsc.com |
| St. Paul the Apostle Catholic School | 152 Alabama Street Spartanburg, SC 29302 | 864.582.6645 | https://www.stpaulschoolsc.com/ |
| St. Peter's Catholic School-Beaufort | 70 Lady's Island Drive Beaufort, SC 29907 | 843.522.2163 | http://saintpeterscatholicsschoolbeaufortsc.org/index.jsp |
| St. Peter's Catholic School-Columbia | 1035 Hampton Street Columbia, SC 29201 | 803.252.8285 | http://stpeterscatholicsschool.org/ |
| Step of Faith Christian Academy | P.O. Box 1449 9009 Tarboro Rd. Ridgeland, SC 29936 | 843.726.6100 | http://www.sfcaweb.org/ |

Each school has completed an Application to Participate in the Educational Credit for Exceptional Needs Children (ECENC) program for school year 2025-26. Each school meets the program standards of Act 247 of 2018. Each school must comply with the Reporting Requirements of Act 247 of 2018 during school year 2025-26, and failure to submit the required reporting information will result in the school's removal from the ECENC program.

As of Monday, December 29, 2025

Educational Credit for Exceptional Needs Children's Fund (ECENC) - Act 247

As of Monday, December 29, 2025

| SCHOOL | ADDRESS | TELEPHONE | WEBSITE ADDRESS |
|---------------------------------|--|--------------|---|
| Summerville Catholic School | 226 Black Oak Blvd Summerville, SC 29485-5800 | 843.873.9310 | www.summervillecatholic.org |
| Sumter Christian School | 420 S. Pike West Sumter, SC 29150 | 803.773.1902 | http://www.sumterchristian.org/ |
| Temple Christian High School | 120 Pinewood Road Sumter, SC 29150 | 803.775.8139 | https://www.tchstians.org/ |
| The Chandler School | 2900 Augusta Street Greenville, SC 29605 | 864.991.8443 | www.thehandlerschool.org |
| The Charleston Catholic School | 888-A King St Charleston, SC 29403-4181 | 843.577.4495 | www.charlestoncatholic.com |
| The Complete Student | 2204 Southside Blvd Port Royal, SC 29935 | 843.379.0193 | https://www.thecompletestudent.com/ |
| The Cooper School | 13 Oakdale Place Charleston, SC 29407 | 843.573.1033 | http://thecooperschool.org/ |
| The King's Academy | 1015 S Ebenezer Road Florence, SC 29501 | 843.661.7464 | www.tkaflorence.com |
| The Timmerman School | 2219 Atascadero Drive Columbia, SC 29206 | 803.782.2748 | https://www.timmermanschool.org/ |
| Thomas Hart Academy | 852 Flinns Road Hartsville, SC 29550 | 843.332.4991 | https://www.thomashart.org/ |
| Thomas Heyward Academy | 1727 Malphrus Road Ridgeland, SC 29936 | 843.726.3673 | http://www.thomasheyward.org/ |
| Thomas Sumter Academy | 5625 Camden Highway Rembert, SC 29128 | 803.499.3378 | www.thomassumter.org |
| Trailhead Community Farm School | The Charles E Shipman Ctr 975 Foot Hills Road Greenville, SC 29617 | 864.710.1752 | https://www.trailheadcfs.org/ |
| Trident Academy | 1455 Wakendaw Road Mt. Pleasant, SC 29464 | 843.884.7046 | http://www.tridentacademy.com/ |

Each school has completed an Application to Participate in the Educational Credit for Exceptional Needs Children (ECENC) program for school year 2025-26. Each school meets the program standards of Act 247 of 2018. Each school must comply with the Reporting Requirements of Act 247 of 2018 during school year 2025-26, and failure to submit the required reporting information will result in the school's removal from the ECENC program.

As of Monday, December 29, 2025

Educational Credit for Exceptional Needs Children's Fund (ECENC) - Act 247

As of Monday, December 29, 2025

| SCHOOL | ADDRESS | TELEPHONE | WEBSITE ADDRESS |
|--------------------------------------|---|--------------|---|
| Trinity Christian Educational School | 524 Martha Drive Anderson, SC 29654 | 864.381.5248 | https://iaminthisimage.org/tces.html |
| Valorous Academy | 701 Main Street N. Myrtle Beach, SC 29582 | 843.548.8474 | https://valorousacademy.com/ |
| Westgate Christian School | 1990 Old Reidville Rd. Spartanburg, SC 29301 | 864.576.4953 | https://www.westgatechristianschool.com/ |
| Westminster Catawba Christian School | 2650 India Hook Road Rock Hill, SC 29732 | 803.366.4119 | http://wccs.org |

Each school has completed an Application to Participate in the Educational Credit for Exceptional Needs Children (ECENC) program for school year 2025-26. Each school meets the program standards of Act 247 of 2018. Each school must comply with the Reporting Requirements of Act 247 of 2018 during school year 2025-26, and failure to submit the required reporting information will result in the school's removal from the ECENC program.

As of Monday, December 29, 2025

Appendix B: Application to Participate in the Educational Credit for
Exceptional Needs Children (ECENC) Program

[ECENC Application to Participate Form, 2026-27.docx](#)

South Carolina Education Oversight Committee (EOC)

Annual Standards Assurance Form

School Year: 2026-27

Application to Participate in Educational Credit for Exceptional Needs Children (ECENC) Program

Please complete the information requested below concerning your independent school. This information will be listed on the South Carolina Education Oversight Committee’s website, <https://eoc.sc.gov/>.

| | |
|---|-----------|
| Independent School Name: | |
| Independent School Contact Person: | |
| Independent School Address: | |
| City, State, Zip Code: | |
| Independent School Telephone Number: | () - |
| Independent School Fax Number: | () - |
| Independent School E-mail Address: | |
| Independent School Website Address: | |

Please review the standards below that are based on Act 247 of 2018. An “eligible school” is defined as “an independent school including those religious in nature, other than a public school, at which the compulsory attendance requirements of Section 59-65-10 may be met.” Please indicate whether your school has met or intends to meet each standard to ensure the following academic and reporting requirements are met. The South Carolina Education Oversight Committee reserves the right to **request additional documentation** to show the school is in compliance with state law. Failure to meet these standards or reporting requirements will result in your school being denied or removed from participation in the program.

| STANDARDS | YES | NO |
|---|--------------------------|--------------------------|
| 1. Offers a general education to primary or secondary school students. | <input type="checkbox"/> | <input type="checkbox"/> |
| 2. Does not discriminate on the basis of race, color, or national origin. | <input type="checkbox"/> | <input type="checkbox"/> |
| 3. Is located in this State. | <input type="checkbox"/> | <input type="checkbox"/> |
| 4. Has an educational curriculum that includes courses set forth in the state’s diploma requirements, graduation certificate requirements for special needs children and where the students attending are administered national achievement or state standardized tests, or both, at progressive grade levels to determine student progress. | <input type="checkbox"/> | <input type="checkbox"/> |
| 5. Has school facilities that are subject to applicable federal, state, and local laws. | <input type="checkbox"/> | <input type="checkbox"/> |
| 6. Is a member in good standing of the Southern Association of Colleges and Schools, the South Carolina Association of Christian Schools, the South Carolina Independent Schools Association, or the Palmetto Association of Independent Schools. | <input type="checkbox"/> | <input type="checkbox"/> |
| 7. Provides a specially designed program or learning resource center to provide needed accommodations based on the needs of exceptional needs students or provides onsite educational services or supports to meet the needs of exceptional needs students or is a school specifically existing to meet the needs of only exceptional needs students with documented disabilities. | <input type="checkbox"/> | <input type="checkbox"/> |

| REPORTING REQUIREMENTS | YES | NO |
|---|--------------------------|--------------------------|
| <p>1. At the time of your application to participate in the program, your school must submit <u>Document A</u> to the EOC and a <u>statement of services</u> that documents your school by February 28, 2026:</p> <p>(a) provides a specially designed program or learning resource to provide needed accommodations based on the needs of exceptional needs students; or</p> <p>(b) provides onsite educational services or supports to meet the needs of exceptional needs students; or</p> <p>(c) exists specifically to meet the needs of only exceptional needs students with documented disabilities.</p> | <input type="checkbox"/> | <input type="checkbox"/> |
| <p>2. Your school will submit <u>Document B</u> to the EOC by June 30, 2026 which documents the number and total dollar amount of grants received in the 2025-26 school year from Exceptional SC.</p> | <input type="checkbox"/> | <input type="checkbox"/> |
| <p>3. Your school will submit directly to the EOC by September 1, 2026 the <u>school-level</u> assessment results for <u>all grades in the school</u> and for each grade with at least (10) students tested. Results should be provided for English language arts (reading) and mathematics achievement of students in each grade tested in school year 2025-26 on <u>Document C</u>.</p> | <input type="checkbox"/> | <input type="checkbox"/> |
| <p>4. If your school received grants from Exceptional SC in school year 2025-26, the school would submit to the EOC a copy of a compilation, review, or compliance audit of the organization's financial statements relating to the grants received, conducted by a certified public accounting firm by November 15, 2026.</p> | <input type="checkbox"/> | <input type="checkbox"/> |

I assure that all documents submitted to the SC Education Oversight Committee for the purpose of applying as an eligible school, as defined by state law, is true, accurate, and complete under penalty of perjury in accordance with Section 16-9-10 of the South Carolina Code of Laws. Failure to report to the EOC the required data will result in the school being removed from the list of approved schools.

Signature: _____

Date: _____

Print Name of Signature Above: _____

Title: _____

Email: _____

Return this form to the Education Oversight Committee

- Phone: 803.734.6148 • E-mail: hjones@eoc.sc.gov • Mail: P.O. Box 11867, Columbia, S.C. 29211
- Fax: 803.734.6167
- Physical Location: Edgar A. Brown Building, Suite 502, 1205 Pendleton Street, Columbia, SC 29201

Appendix C: Manual for Schools Applying to Participate in the
Educational Credit for Exceptional Needs Children (ECENC) Program
School Year 2025-26:

[ECENC Manual for SY2025-26 - Copy.pdf](#)

**Application Process for School Eligibility
Educational Credit for Exceptional Needs Children
Program
School Year 2025-26**



**SC EDUCATION
OVERSIGHT COMMITTEE**

Reporting facts. Measuring change. Promoting progress.

Table of Contents

Application Process

| | |
|-----------------------------|---|
| Program Standards | 4 |
| Reporting Requirements..... | 5 |
| Definitions..... | 5 |
| Timeline | 5 |

Documentation of Reporting Requirements

| | |
|--|----|
| Application to Participate in ECENC Program | 8 |
| Document A – Statement of Services..... | 11 |
| Document B – Grants Received | 13 |
| Request to Review | 15 |
| Document C – Assessment Data..... | 17 |
| Audit Clarification Letter | 19 |
| Completion of the Application Process to Participate | 19 |

Appendix

| | |
|---|----|
| Act 247 of 2018 as amended May 17, 2021 | 21 |
| Contact Information | 28 |

Application Process

Annually by March 1, the Education Oversight Committee (EOC) is required to publish on its website a list of schools that desire to participate in the Educational Credit for Exceptional Needs Children (ECENC) program and that meet the statutory requirements for participation.

Act 247 of 2018, as amended May 17, 2021, articulates the eligibility and reporting requirements that schools must follow in order to participate in the ECENC program. Act 247 of 2018 is included in the Appendix. Schools that participated in the ECENC program in the prior year as well as schools desiring to participate in the ECENC program for the first time must meet the same **program standards** and comply with the same **reporting requirements**.

Program Standards

The law defines an eligible school as “an independent school including those religious in nature, other than a public school, at which the compulsory attendance requirements of Section 59-65-10 may be met, that:

- (a) offers a general education to primary or secondary school students;
- (b) does not discriminate on the basis of race, color, or national origin;
- (c) is located in this State;
- (d) has an educational curriculum that includes courses set forth in the state’s diploma requirements, graduation certificate requirements for special needs children, and where the students attending are administered national achievement or state standardized tests, or both, at progressive grade levels to determine student progress;
- (e) has school facilities that are subject to applicable federal, state, and local laws;
- (f) is a member in good standing of the Southern Association of Colleges and Schools, the South Carolina Association of Christian Schools, the South Carolina Independent Schools Association, or Palmetto Association of Independent Schools; and
- (g) provides a specially designed program or learning resource center to provide needed accommodations based on the needs of exceptional needs students or provides onsite educational services or supports to meet the needs of exceptional needs students, or is a school specifically existing to meet the needs of only exceptional needs students with documented disabilities.” (*Section 12-6-3790(A)(1)*)

Reporting Requirements

By law, schools that participate in the ECENC must report the following information to the EOC. This information will be posted online at the EOC's website at www.eoc.sc.gov:

“(a) the number and total amount of grants received in the preceding school year;

(b) student test scores, by category, on national achievement or state standardized tests, or both, for all grades tested and administered by the school receiving or entitled to receive scholarship grants pursuant to this section in the previous school year;

(c) a copy of a compilation, review, or compliance audit of the organization's financial statements as relating to the grants received, conducted by a certified public accounting firm; and

(d) a certification by the independent school that it meets the definition of an eligible school as that term is defined in subsection (A)(1) and that the report is true, accurate, and complete under penalty of perjury in accordance with Section 16-9-10.”

Definitions

The EOC uses the state fiscal year, July 1 through June 30 as the definition of a school year. For example, schools applying to participate in the ECENC program for the 2025-26 school year are schools that will participate in the program between July 1, 2025 and June 30, 2026. In such case, the previous school year is defined as school year 2024-25, which began on July 1, 2024 and concluded June 30, 2025.

Timeline

Following is the timeline by which schools desiring to participate in the ECENC program must submit an application and appropriate reporting requirements. It is the responsibility of the schools to meet the reporting requirements. While the EOC will make every effort to communicate with schools, changes in administration and personnel at the school level occur. **It is the responsibility of schools participating in the ECENC program to notify the EOC either in writing or by email of changes in the names or contact information for persons responsible for submitting all required documentation to the EOC.**

| | |
|---|--|
| <p>On or before February 1</p> | <p>Applications for participation in the ECENC program for the subsequent school year begin.</p> <p>The EOC will notify by email each school currently participating in the ECENC program that the application process is open. All current school contacts on file at the EOC are notified. The EOC will provide a document that each school must complete and submit to the EOC that guarantees that the school meets the standards and that the school will comply with all reporting requirements.</p> <p>The application must include a statement of services (Document A) at the time of application to be considered for participation in the ECENC program by February 28, 2025.</p> <p>For schools that are operated and governed under one organization, like the Catholic Diocese of Charleston, the EOC will accept one application for all schools as long as the governing body provides a list of the school names, addresses, telephone numbers, and, if available, website address of each school.</p> <p style="text-align: center;">Application to Participate in ECENC Program Document A</p> |
| <p>On or before March 1</p> | <p>The EOC will publish on its website a list of schools meeting the standards and reporting requirements for participation in the ECENC program. The list will include: the school's name, addresses, telephone numbers, and, if available, website address.</p> |
| <p>On or before June 30</p> | <p>A school approved to participate in the program must submit to the EOC information on grants received from Exceptional SC in the prior school year:</p> <p style="text-align: center;">Document B – Grants Received</p> <p>Failure of a school to provide Document B and the corresponding information will result in the school's removal from the program. The EOC will notify the school by email of the removal. Schools wishing to remain in the program will be required to complete a "Request for Review Form" prior to submission of required material. The EOC will also notify Exceptional SC and the South Carolina Department of Revenue of the Reinstatement of a school.</p> |

| | |
|--|---|
| <p>On or before September 1</p> | <p>A school approved to participate in the program must submit directly to the EOC by September 1, school-level assessment results from the prior school year for <u>all grades in the school</u> and for each grade with at least (10) students tested. Results should be provided for English language arts (reading) and mathematics achievement of students in each grade tested in school year 2024-25:</p> <p style="text-align: center;"><u>Document C – School-Level Assessment Data</u></p> <p>Failure of a school to provide Document C and the corresponding information will result in the school’s removal from the program. The EOC will notify the school by email of the removal. Schools wishing to remain in the program will be required to complete a “<u>Request for Review Form</u>” prior to submission of required material. The EOC will also notify Exceptional SC and the Department of Revenue of the Reinstatement of a school.</p> |
| <p>On or before November 15</p> | <p>A school that is approved to participate in the program in the current school year, that participated in the program in the prior school year, and that received grants from Exceptional SC in the prior school year must submit to <u>the EOC</u> a copy of a compilation, review, or compliance audit of the organization’s financial statements as relating to the grants received, conducted by a certified public accounting firm.</p> <p style="text-align: center;"><u>Audit Clarification Letter</u></p> <p>Failure of a school to provide a copy of a compilation, review, or compliance audit, conducted by a certified public accounting firm will result in the school’s removal from the program The EOC will notify the school by email of the removal. Schools wishing to remain in the program will be required to complete a “<u>Request for Review Form</u>” prior to submission of required material. The EOC will also notify Exceptional SC and the Department of Revenue of the Reinstatement of a school.</p> |

NOTE: For schools that are operated and governed under one organization, like the Catholic Diocese of Charleston, the EOC will accept one application for all schools as long as the governing body provides a list of the school names, addresses, telephone numbers, and, if available, website address of each school. In addition, the EOC will accept all information required by Documents A, B and C and the compilation, review or compliance audit for schools that are operated and governed under one organization, like the Catholic Diocese of Charleston, in one document to facilitate reporting.

Documentation of Reporting Requirements

The following is additional information concerning the documents that must be submitted by schools participating in the ECENC program. The information is organized by the actual document.

Failure to provide to comply with the reporting requirements will result in the school being removed from the list of eligible schools. Schools wishing to remain in the program will be required to complete a [“Request for Review Form”](#) prior to submission of required material. The school, Exceptional SC, and the South Carolina Department of Revenue will be notified of the school’s participation in and removal from the program. Exceptional SC is the entity that awards grants for eligible students attending approved schools. The South Carolina Department of Revenue is the entity responsible for administering the Parental Refundable Tax Credit for an eligible exceptional needs child who attends an approved school.

Application to Participate in ECENC Program

The application to participate in the ECENC Program is the initial document that a school choosing to participate in the ECENC program must complete. By March 1, the EOC will publish on its website a list of schools that successfully complete this document. This document requires schools to indicate whether the school meets each program standard and whether the school intends to submit the appropriate documents for reporting requirements. The EOC reserves the right to request additional documentation to show the school is in compliance with state law.

Participation in the ECENC program does not guarantee that eligible students attending eligible schools will receive grants from Exceptional SC. Decisions on grants are made by Exceptional SC and will likely be impacted by the date when a school completes its initial application to participate in the ECENC Program. Schools are highly encouraged to meet all published deadlines.

South Carolina Education Oversight Committee (EOC)

Annual Standards Assurance Form

School Year: 2025-26

Application to Participate in Educational Credit for Exceptional Needs Children (ECENC) Program

Please complete the information requested below concerning your independent school. This information will be listed on the South Carolina Education Oversight Committee’s website, <https://eoc.sc.gov/>.

| | |
|---|-----------|
| Independent School Name: | |
| Independent School Contact Person: | |
| Independent School Address: | |
| City, State, Zip Code: | |
| Independent School Telephone Number: | () - |
| Independent School Fax Number: | () - |
| Independent School E-mail Address: | |
| Independent School Website Address: | |

Please review the standards below that are based on Act 247 of 2018. An “eligible school” is defined as “an independent school including those religious in nature, other than a public school, at which the compulsory attendance requirements of Section 59-65-10 may be met.” Please indicate whether your school has met or intends to meet each standard to ensure the following academic and reporting requirements are met. The South Carolina Education Oversight Committee reserves the right to **request additional documentation** to show the school is in compliance with state law. Failure to meet these standards or reporting requirements will result in your school being denied or removed from participation in the program.

| STANDARDS | YES | NO |
|---|--------------------------|--------------------------|
| 1. Offers a general education to primary or secondary school students. | <input type="checkbox"/> | <input type="checkbox"/> |
| 2. Does not discriminate on the basis of race, color, or national origin. | <input type="checkbox"/> | <input type="checkbox"/> |
| 3. Is located in this State. | <input type="checkbox"/> | <input type="checkbox"/> |
| 4. Has an educational curriculum that includes courses set forth in the state’s diploma requirements, graduation certificate requirements for special needs children and where the students attending are administered national achievement or state standardized tests, or both, at progressive grade levels to determine student progress. | <input type="checkbox"/> | <input type="checkbox"/> |
| 5. Has school facilities that are subject to applicable federal, state, and local laws. | <input type="checkbox"/> | <input type="checkbox"/> |
| 6. Is a member in good standing of the Southern Association of Colleges and Schools, the South Carolina Association of Christian Schools, the South Carolina Independent Schools Association, or the Palmetto Association of Independent Schools. | <input type="checkbox"/> | <input type="checkbox"/> |
| 7. Provides a specially designed program or learning resource center to provide needed accommodations based on the needs of exceptional needs students or provides onsite educational services or supports to meet the needs of exceptional needs students or is a school specifically existing to meet the needs of only exceptional needs students with documented disabilities. | <input type="checkbox"/> | <input type="checkbox"/> |

| REPORTING REQUIREMENTS | YES | NO |
|---|--------------------------|--------------------------|
| 1. <u>At the time of your application to participate in the program</u>, your school must submit <u>Document A</u> to the EOC and a <u>statement of services</u> that documents your school by February 28, 2025: (a) provides a specially designed program or learning resource to provide needed accommodations based on the needs of exceptional needs students; or (b) provides onsite educational services or supports to meet the needs of exceptional needs students; or (c) exists specifically to meet the needs of only exceptional needs students with documented disabilities. | <input type="checkbox"/> | <input type="checkbox"/> |
| 2. Your school will submit <u>Document B</u> to the EOC by June 30, 2025 which documents the number and total dollar amount of grants received in the 2024-25 school year from Exceptional SC. | <input type="checkbox"/> | <input type="checkbox"/> |
| 3. Your school will submit directly to the EOC by September 1, 2025 the <u>school-level</u> assessment results for <u>all grades in the school</u> and for each grade with at least (10) students tested. Results should be provided for English language arts (reading) and mathematics achievement of students in each grade tested in school year 2024-25 on <u>Document C</u>. | <input type="checkbox"/> | <input type="checkbox"/> |
| 4. If your school received grants from Exceptional SC in school year 2024-25, the school would submit to the EOC a copy of a compilation, review, or compliance audit of the organization's financial statements relating to the grants received, conducted by a certified public accounting firm by November 15, 2025. | <input type="checkbox"/> | <input type="checkbox"/> |

I assure that all documents submitted to the SC Education Oversight Committee for the purpose of applying as an eligible school, as defined by state law, is true, accurate, and complete under penalty of perjury in accordance with Section 16-9-10 of the South Carolina Code of Laws. Failure to report to the EOC the required data will result in the school being removed from the list of approved schools.

Signature: _____

Date: _____

Print Name of Signature Above: _____

Title: _____

Email: _____

Return this form to the Education Oversight Committee

- Phone: 803.734.6148 • E-mail: hjones@eoc.sc.gov • Mail: P.O. Box 11867, Columbia, S.C. 29211
- Fax: 803.734.6167
- Physical Location: Edgar A. Brown Building, 1205 Pendleton Street, Suite 502, Columbia, SC 29201

Document A – Statement of Services

Each school must provide a statement of services that documents how the school:

- (a) provides a specially designed program or learning resource to provide needed accommodations based on the needs of exceptional needs students; **or**
- (b) provides onsite educational services or supports to meet the needs of exceptional needs students; **or**
- (c) exists specifically to meet the needs of only exceptional needs students with documented disabilities.

The statement of services must accompany the application to be considered for participation in the ECENC program.

Schools can review applications from prior years on the EOC website (www.eoc.sc.gov) to see examples of what services are provided. The purpose of this document is to substantiate that the school does serve the needs of exceptional needs children/students.

Please do not provide any Individualized Education Programs (IEPs), 504 plans, or any student-level information to the EOC. It is a violation of federal and state laws, and such information will be properly disposed of to maintain the privacy of students.

The Statement of Services submitted with Document A must include information on the specific accommodations, supports, therapies and/or interventions provided to the student with unique learning styles as well as the diagnoses (such as ADHD, ADD, Autism, Dyslexia, Down Syndrome, Processing Disorders, Speech Delays, Oppositional Defiance Disorder, Bi-Polar, etc.) that those specific services are geared towards.

**Document A
Statement of Services**

**Educational Credit for Exceptional Needs Children (ECENC) Program
2025-26**

Independent School Name: _____

An independent school participating in the Educational Credit for Exceptional Needs Children is required to submit a Statement of Services that documents that the school **at the time of your application to participate in the program:**

- (a) provides a specially designed program or learning resource to provide needed accommodations based on the needs of exceptional needs students; or
- (b) provides onsite educational services or supports to meet the needs of exceptional needs students; or
- (c) exists specifically to meet the needs of only exceptional needs students with documented disabilities.

Please sign below and attach a statement of services.

The Statement of Services submitted with Document A must include information on the specific accommodations, supports, therapies and/or interventions provided to the student with unique learning styles as well as the diagnoses (such as ADHD, ADD, Autism, Dyslexia, Down Syndrome, Processing Disorders, Speech Delays, Oppositional Defiance Disorder, Bi-Polar, etc.) that those specific services are geared towards.

Signature: _____

Date: _____

Print Name of Signature Above: _____

Title: _____

Email: _____

Document B – Grants Received

The first question asks how many students in kindergarten through grade 12 were enrolled in your school in the prior school year. This information is used to compare the school's enrollment with the number of students who received grants from Exceptional SC. The EOC needs this information to determine which schools have at least 51 percent of the total enrolled students participating in the ECENC program. *(Section 12-6-3790(E)(6))*

Each school must also report the number and total dollar amount of grants received by the school in the prior school year from Exceptional SC. The total number of grants is defined as the number of individual children/students who received a grant from Exceptional SC in the prior school year even if the school received more than one grant or check for a specific child/student.

If no grants for any student were received by the school in the prior year from Exceptional SC, please indicate "0" grants received and "\$0" in total amount of grants received. All schools, including schools that did not participate in the program in the prior school year, must complete this document.

Neither the EOC or its staff can answer any questions about the number and amount of grants received or questions about the status of grant applications. All questions regarding the grant process should be directed to Exceptional SC.

Please do not send any information to the EOC that lists the names of students who received grants. Submission of such personally identifiable information violates state and federal privacy laws.

**Document B
Grants Received**

**Educational Credit for Exceptional Needs Children (ECENC) Program
2025-26**

Independent School Name: _____

An independent school participating in the ECENC Program is required to submit the following information by **June 30**:

How many students in kindergarten through grade 12 were enrolled in your school in the prior school year? _____

What is the total number of grants and total amount of grants received in the prior school year from Exceptional SC? Please complete the following chart and sign below.

If no grants for any qualifying student were received from Exceptional SC in the prior school year, please indicate with "0" grants received and "\$0" in total amount of grants received from Exceptional SC.

| Total Number of Grants Received | Total Amount of Grants Received |
|--|--|
| # | \$ |

Total number of grants is the number of individual children/students who received a grant even if the school received more than one grant for a specific child/student.

Signature: _____

Date: _____

Print Name of Signature Above: _____

Title: _____

Email: _____

If your school has failed to make the Educational Credits for Exceptional Children (ECENC) Program Standards as stated or Reporting Requirements by stated deadlines and has been removed or terminated from participation, please fill out this form and include corrections, attachments and/or letters to become eligible for reinstatement.

Request for Review

To be completed by a school administrator or program manager. Use black ink if completing by hand.

| | | |
|---|--|-------|
| General Information | | |
| 1. Person making request: | 2. School name: | |
| 3. School address: | 4. School phone number: | |
| Change reason | | |
| <input type="checkbox"/> School clerical error or delay* | <input type="checkbox"/> Other <i>See attached letter of justification/explanations</i> | |
| Change requested: | Requested effective date: | |
| <p>If School error, explain in detail:</p> | | |
| Certification | | |
| <p>*Clerical errors made by the school administrator or program manager and delays in making stated deadlines of such documents shall not invalidate the statutory responsibility of the Education Oversight Committee (EOC) to remove or terminate the school from the ECENC Program. Upon notification of any such error or delay, the school has 10 working days to make the adjustment and/or submit required documents. Terminations or removals are processed immediately, and all related entities will be notified.</p> <p>If this request is denied, the school administrator or project manager must notify the EOC by copy of the form of your right to ask for a review by writing to the EOC within 30 days of notice of this decision.</p> | | |
| Signature of person completing form: | Position & Email: | Date: |
| <input type="checkbox"/> Completed Document attached | <input type="checkbox"/> Supporting documentation attached | |
| For EOC use only | | |
| <input type="checkbox"/> Approved | Effective date: | |
| <input type="checkbox"/> Denied | Reason for denial: | |

Mail completed form to: SC Education Oversight Committee | ATTN: ECENC Program | Edgar A. Brown Building, Suite 502 | 1205 Pendleton Street | Columbia, SC 29201 | Fax: 803.734.6167 | Email: hjones@eoc.sc.gov | Questions: 803.734.2714

Document C – Assessment Data

All schools must provide **school-level assessment data by September 1** that will be reported and documented online.

Schools are asked to report which national assessments are administered at each grade level in English language arts (ELA)/reading and mathematics. If a school chooses to add other content areas, they may. At a minimum, the EOC needs to know which ELA/reading and mathematics assessments are administered.

To maintain student privacy, the EOC is requesting schools report overall student results for all grades tested in the school and for each grade with **at least 10 students tested.** If each grade tested in the school had less than 10 students in the 2024-25 school year, a statement of that fact should be put on school letterhead and signed by a program/school administrator.

Information should be provided for English language arts (reading) and mathematics achievement of students in the grade. Examples of national achievement tests include: *TerraNova, Stanford 10, Iowa Test of Basic Skills, etc.* For grades 9-12, the school may provide average PSAT, SAT, ACT, or other scores as appropriate. For schools that specifically exist to meet the needs of only exceptional needs students with documented disabilities, the EOC will work with the schools to provide information (including formative assessments, portfolios, etc.) that document the students' academic and social development.

Document C also asks for the **name of at least one individual or employee of the school** who will provide the **School-Level Assessment Results** administered on national achievement tests during the prior school year.

Document C
Assessment Data

Educational Credit for Exceptional Needs Children (ECENC) Program

2025-26

Independent School Name: _____

A school applying for participation in the ECENC Program must provide directly to the EOC by **September 1** the following:

School-level Assessment Results

In the chart below, please list the NAME of each national achievement test that was administered and the grade in which the test is administered for the prior school year. Examples include: *TerraNova, Stanford 10, Iowa Test of Basic Skills, MAP, PSAT, SAT, ACT, etc.*

For schools that specifically exist to meet the needs of only exceptional needs students with documented disabilities, please document how the school documents students' academic and social development.

| Grade | English language arts (Reading) | Mathematics | Other |
|--------------|--|--------------------|--------------|
| | | | |
| | | | |
| | | | |
| | | | |
| | | | |

For each national assessment listed above and for each grade with at least 10 students tested, please attach the results from the prior school year. In reporting the achievement level, the school can use mean/median scale scores, national percentile rankings, stanines, grade equivalents, etc.

The individual submitting school-level assessment information must sign below.

Signature: _____

Date: _____

Print Name of Signature Above: _____

Title: _____

Email: _____

Audit Clarification Letter

State law requires that an independent school's application to the Educational Credit for Exceptional Needs Children (ECENC) program include "a copy of a compilation, review, or compliance audit of the organization's financial statements as relating to the grants received, conducted by a certified public accounting firm." The term compliance audit refers to a determination of whether the school in the prior fiscal year complied with the requirements of the Educational Credit for Exceptional Needs Children Program.

Annually, the EOC produces an audit clarification letter that a certified public accounting firm can use to determine a school's compliance with the ECENC program by **November 15, 2025.**

Completion of the Application Process for SY2025-26

In an agreement with the SC Department of Revenue (DOR), the EOC will supply the names of schools in good standing with the ECENC Program to identify parents/taxpayers qualified for the Parental Refundable Tax Credit for Tax Year 2025. No school will be added/reinstated for the 2025-26 school year after the EOC's submission to DOR. This completion of the Application Process allows the EOC to compile the annual report that is required by Act 247 to be issued to the General Assembly. The ECENC Program Application Process for SY2026-27 will begin in January 2026.

January 16, 2025:

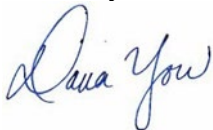
To Whom It May Concern:

State law requires that an independent school's application to the Educational Credit for Exceptional Needs Children (ECENC) program include "a copy of a compilation, review, or compliance audit of the organization's financial statements as relating to the grants received, conducted by a certified public accounting firm."

The term compliance audit refers to a determination of whether the school in the prior fiscal year complied with the requirements of the Educational Credit for Exceptional Needs Children Program. The certified public accounting firm confirms in writing by **November 15, 2025** that:

- the independent school can document and verify that all grants received under the Educational Credit for Exceptional Needs Children Program in 2024-25 were for eligible children enrolled in the school;
- the independent school can document the total amount of each grant per child from Exceptional SC;
- the independent school can document that no grant exceeded \$11,000 during school year 2024-25;
- the independent school returned a prorated amount of the grant to Exceptional SC if any student withdrew during the school year; and
- the total amount of each grant was used for tuition which is defined as "the total amount of money charged for the cost of a qualifying student to attend an independent school including, but not limited to, fees for attending the school and school-related transportation."

Sincerely,



Dana Yow
Executive Director

Appendix

Act 247 of 2018 as Amended May 17, 2021

Educational Credit for Exceptional Needs Children's Fund

SECTION 1. Article 25, Chapter 6, Title 12 of the 1976 Code is amended by adding:

“Section 12-6-3790. (A) As used in this section:

(1) "Eligible school" means an independent school including those religious in nature, other than a public school, at which the compulsory attendance requirements of Section 59-65-10 may be met, that:

(a) offers a general education to primary or secondary school students;

(b) does not discriminate on the basis of race, color, or national origin;

(c) is located in this State;

(d) has an educational curriculum that includes courses set forth in the state's diploma requirements, graduation certificate requirements for special needs children, and where the students attending are administered national achievement or state standardized tests, or both, at progressive grade levels to determine student progress;

(e) has school facilities that are subject to applicable federal, state, and local laws;

(f) is a member in good standing of the Southern Association of Colleges and Schools, the South Carolina Association of Christian Schools, the South Carolina Independent Schools Association, or Palmetto Association of Independent Schools; and

(g) provides a specially designed program or learning resource center to provide needed accommodations based on the needs of exceptional needs students or provides onsite educational services or supports to meet the needs of exceptional needs students, or is a school specifically existing to meet the needs of only exceptional needs students with documented disabilities.

(2) "Exceptional needs child" means a child:

(a) who has been evaluated in accordance with this state's evaluation criteria, as set forth in S.C. Code Ann. Regs. 43-243.1, and determined eligible as a child with a disability who needs special education and related services, in accordance with the requirements of Section 300.8 of the federal Individuals with Disabilities Education Act; or

(b) who has been diagnosed within the last three years by a licensed speech-language pathologist, psychiatrist, or medical, mental health, psychoeducational, or other comparable licensed health care provider as having a neurodevelopmental disorder, a substantial sensory or physical impairment such as deaf, blind, or orthopedic disability, or some other disability or acute or chronic condition that significantly impedes the student's ability to learn and succeed in school without specialized instructional and associated supports and services tailored to the child's unique needs.

(3) "Independent school" means a school, other than a public school, at which the compulsory attendance requirements of Section 59-65-10 may be met and that does not discriminate based on the grounds of race, color, religion, or national origin.

(4) "Parent" means the natural or adoptive parent or legal guardian of a child.

(5) "Qualifying student" means a student who is an exceptional needs child, a South Carolina resident, and who is eligible to be enrolled in a South Carolina secondary or elementary public school at the kindergarten or later year level for the applicable school year.

(6) "Resident public school district" means the public school district in which a student resides, or in the case of dependents of active military personnel, the public school district which the student may attend.

(7) "Transportation" means transportation to and from school only.

(8) "Tuition" means the total amount of money charged for the cost of a qualifying student to attend an independent school including, but not limited to, fees for attending the school, textbook fees, and school-related transportation.

(B)(1) There is created the "Educational Credit for Exceptional Needs Children's Fund" that is separate and distinct from the state general fund. The fund must be organized as a public charity as defined by the Internal Revenue Code under Section 509(a)(1) through (4) and consist only of contributions made to the fund. The fund may not receive an appropriation of public funds. The fund must receive and hold all contributions intended for it as well as all earnings until disbursed as provided in this section. Monies received in the fund must be used to provide scholarships to exceptional needs children attending eligible schools.

(2) The amounts on deposit in the fund do not constitute public funds and are not the property of the State. Amounts on deposit in the fund may not be commingled with public funds, and the State does not have a claim to or interest in the amounts on deposit. Agreements or contracts entered into by or on behalf of the fund do not constitute a debt or obligation of the State.

(3) The public charity disbursing contributions made to the fund is governed by five directors, two appointed by the Chairman of the House Ways and Means Committee, two appointed by the Chairman of the Senate Finance Committee, and one appointed by the Governor. The directors of the public charity shall designate an executive director of the public charity.

(4) The public charity directors shall administer the public charity including, but not limited to, the keeping of records, the management of accounts, and disbursement of the grants awarded pursuant to this section. The public charity may expend up to five percent of the fund for administration and related costs. The public charity may not expend public funds to administer the program. Information contained in or produced from a tax return, document, or magnetically or electronically stored data utilized by the Department of Revenue or the public charity in the exercise of its duties as provided in this section must remain confidential and is exempt from disclosure pursuant to the Freedom of Information Act. Personally identifiable information, as described in the Family Educational Rights and Privacy Act and individual health records, or the medical or wellness needs of children applying for or receiving grants must remain confidential and is not subject to disclosure pursuant to the Freedom of Information Act.

(5) By January fifteenth of each year, the public charity shall report to the Chairman of the Senate Finance Committee, the Chairman of the House Ways and Means Committee, and the Governor:

(a) the number and total amount of grants issued to eligible schools in each year;

(b) the identity of the school and the amount of the grant for each grant issued to an eligible school in each year;

(c) an itemized and detailed explanation of fees or other revenues obtained from or on behalf of an eligible school;

(d) a copy of a compilation, review, or audit of the fund's financial statements, conducted by a certified public accounting firm; and

(e) the criteria and eligibility requirements for scholarship awards.

(C)(1) Grants may be awarded in an amount not exceeding eleven thousand dollars or the total annual cost of tuition, whichever is less, to a qualifying student at an eligible school. A qualifying student receiving a grant may not be charged tuition by an eligible school in an amount greater than the student would be charged if the student was not a qualifying student.

(2) Before awarding a grant, the public charity shall receive written documentation from the qualifying student's parent or guardian documenting that the qualifying student is an exceptional needs child. Upon approving the application, the public charity shall issue a check to the eligible school in the name of the qualifying student within either thirty days upon approval of the application or thirty days of the start of the school's semester.

(3) If a qualifying student leaves or withdraws from the school for any reason before the end of the semester or school year and does not reenroll within thirty days, then the eligible school shall return a prorated amount of the grant to the public charity based on the number of days the qualifying student was enrolled in the school during the semester or school year within sixty days of the qualifying student's departure.

(4) The public charity may not award grants only for the benefit of one school.

(5) The department or the public charity may not release personally identifiable information pertaining to students or donors or use information collected about donors, students, or schools for financial gain.

(6) The public charity shall develop a process to prioritize the awarding of grants to eligible incumbent grant recipients at eligible schools.

(D)(1)(a) Tax credits authorized by subsection (H)(1) and subsection (I) annually may not exceed cumulatively a total of twelve million dollars for contributions to the Educational Credit for Exceptional Needs Children's Fund, unless an increased limit is authorized in the annual general appropriations act. However, the fund may carry forward up to five million dollars of donations into the next year to provide credits in the next year. This carryforward amount does not in any way increase the cumulative tax credit amount set forth in this item for any one year.

(b) Tax credits authorized pursuant to subsection (H)(2) annually may not exceed cumulatively a total of two million dollars for tuition payments made on behalf of qualifying students, unless an

increased limit is authorized in the annual general appropriations act. However, if less than the maximum cumulative total of tax credits allowed pursuant to subitem (a) are authorized, then, the maximum cumulative total of tax credits allowed pursuant to this subitem may be increased by up to three million dollars, but the cumulative total of all tax credits authorized pursuant to this section may not be increased as a result.

(c) If the department determines that the total of the credits claimed by all taxpayers exceeds either limit amount as contained in subitems (a) or (b), it shall allow credits only up to those amounts on a first come, first-served basis.

(2)(a) The department shall establish an application process to determine the amount of credit available to be claimed. The receipt of the application by the department determines priority for the credit. The credit must be claimed on the return for the tax year that the contribution is made.

(b) A taxpayer may not claim more than seventy-five percent of his total tax liability for the year in contribution toward the tax credit authorized by subsection (H)(1) or subsection (I). This credit is nonrefundable. Any unused credit may be carried forward three tax years after the tax year in which the qualified contribution is first eligible to be claimed.

(c) If a taxpayer deducts the amount of the contribution on his federal return and claims the credit allowed by subsection (H)(1) or subsection (I), then he must add back the amount of the deduction for purposes of South Carolina income taxes.

(d) The department shall prescribe the form and manner of proof required to obtain the credit authorized by subsection (H)(1) or subsection (I). The department also shall develop a method of informing taxpayers if the credit limit is met any time during the tax year.

(e) A taxpayer only may claim a credit pursuant to subsection (H)(1) and subsection (I) for contributions made during the tax year.

(3) A corporation or entity entitled to a credit under subsection (H)(1) and subsection (I) may not convey, assign, or transfer the credit authorized by this section to another entity unless all of the assets of the entity are conveyed, assigned, or transferred in the same transaction.

(E)(1) By March first of each year, an independent school who participated in the program in the previous year and who desires to participate in the program in the current year shall reapply to the Education Oversight Committee. The independent school shall certify to the Education Oversight Committee that it continues to meet all program requirements and shall provide to the committee student test score data from the previous school year by June thirtieth. If student test score data is not submitted by June thirtieth, then the Education Oversight Committee shall remove the school from the program. An independent school desiring to participate in the program for the first time also shall apply by March first of each year. The Education Oversight Committee shall consult with the Southern Association of Colleges and Schools, the South Carolina Association of Christian Schools, the South Carolina Independent Schools Association, the Palmetto Association of Independent Schools, or the Diocese of Charleston to verify that the school is still a member in good standing and that the school continues to serve exceptional needs children. An independent school who did not participate in the program in the previous year but desires to participate in the program in the current year shall apply to the Education Oversight Committee. The Education Oversight Committee shall develop an application to be completed by the independent schools which must contain at least:

- (a) the number and total amount of grants received in the preceding school year;
 - (b) student test scores, by category, on national achievement or state standardized tests, or both, for all grades tested and administered by the school receiving or entitled to receive scholarship grants pursuant to this section in the previous school year;
 - (c) a copy of a compilation, review, or compliance audit of the organization's financial statements as relating to the grants received, conducted by a certified public accounting firm; and
 - (d) a certification by the independent school that it meets the definition of an eligible school as that term is defined in subsection (A)(1) and that the report is true, accurate, and complete under penalty of perjury in accordance with Section 16-9-10.
- (2)(a) The Education Oversight Committee may waive the March first deadline contained in subsection (E) upon good cause shown by an independent school.
- (b) The Education Oversight Committee may waive some or all of the curriculum requirements contained in subsection (A)(1)(d) following consultation with the advisory committee.
- (3)(a) By March first of each year the Education Oversight Committee shall publish on its website a comprehensive list of independent schools certified as eligible institutions. The list must include for each eligible institution:
- (i) the institution's name, addresses, telephone numbers, and, if available, website addresses; and
 - (ii) the score reports and compliance audits received by the committee pursuant to subsection (E)(1)(b) and (c).
- (b) The Education Oversight Committee shall summarize or redact the score reports identified in subitem (a)(ii) if necessary to prevent the disclosure of personally identifiable information.
- (4) An independent school that does not apply for certification pursuant to this subsection may not be included on the list of eligible schools and contributions to that school may not be allowed for purposes of the tax credits permitted by this section.
- (5) An independent school that is denied certification pursuant to this section may seek review by filing a request for a contested case hearing with the Administrative Law Court in accordance with the court's rules of procedure.
- (6) Annually, the Education Oversight Committee shall issue a report to the General Assembly documenting the impact of the Educational Credit for Exceptional Needs Children Program on student achievement. In addition, the report must include information on individual schools if at least fifty-one percent of the total enrolled students in the private school participated in the Educational Credit for Exceptional Needs Children Program in the prior school year. The report must be according to each participating private school, and for participating students, in which there are at least thirty participating students who have scores for tests administered. If the Education Oversight Committee determines that the thirty participating-student cell size may be reduced without disclosing personally identifiable information of a participating student, the Education Oversight Committee may reduce the participating-student cell size, but the cell size may not be reduced to less than ten participating students.

(F)(1) The Education Oversight Committee shall establish an advisory committee made up of not more than nine members, including parents, and representatives of independent schools and independent school associations.

(2) The advisory committee shall:

(a) consult with the Education Oversight Committee concerning requests for exemptions from curriculum requirements; and

(b) provide recommendations on other matters requested by the Education Oversight Committee.

(G) Except as otherwise provided, the Department of Education, the Education Oversight Committee, and the Department of Revenue, or any other state agency may not regulate the educational program of an independent school that accepts students receiving scholarship grants pursuant to this section.

(H)(1) A taxpayer is entitled to a tax credit against income taxes imposed pursuant to this chapter for the amount of cash and the monetary value of any publicly traded securities the taxpayer contributes to the Educational Credit for Exceptional Needs Children's Fund up to the limits contained in subsection (D)(1)(a) if:

(a) the contribution is used to provide grants for tuition to exceptional needs children enrolled in eligible schools who qualify for these grants under the provisions of this section; and

(b) the taxpayer does not designate a specific child or school as the beneficiary of the contribution.

(2)(a) A taxpayer is entitled to a refundable tax credit against income taxes imposed pursuant to this chapter for the amount of cash and the monetary value of any publicly traded securities, not exceeding eleven thousand dollars for each child, for tuition payments to an eligible school for an exceptional needs child within his custody or care who would be eligible for a grant pursuant to this section up to the limits contained in subsection (D)(1)(b).

(b) If a child within the care and custody of a taxpayer claiming a tax credit pursuant to this item also receives a grant from the Educational Credit for Exceptional Needs Children's Fund, then the taxpayer only may claim a credit equal to the difference of eleven thousand dollars or the cost of tuition, whichever is lower, and the amount of the grant.

(c) A child within the care and custody of a taxpayer claiming a tax credit pursuant to this item may not be charged tuition by an eligible school in an amount greater than the student would be charged if the student was not a qualifying student.

(I) A taxpayer is entitled to a tax credit against income taxes imposed pursuant to Chapter 11, Title 12 for the amount of cash and the monetary value of any publicly traded securities the taxpayer contributes to the Educational Credit for Exceptional Needs Children's Fund up to the limits contained in subsection (D)(1)(a) if:

(1) the contribution is used to provide grants for tuition to exceptional needs children enrolled in eligible schools who qualify for these grants under the provisions of this section; and

(2) the taxpayer does not designate a specific child or school as the beneficiary of the contribution.

(J)(1) The department shall conduct a comprehensive study of the Exceptional Needs Tax Credit program. The study must examine the following:

(a) the allocation of scholarship funds and tax credits among students, including the effect of funding limitations on the addition of new participants; the demographic and socio-economic data of the participants and their families, including the distribution of scholarship funds by income ranges, to be determined by the department, of scholarship recipients, and their legal guardians, as applicable; and the geographical distribution of the participants. In reporting the information required by this subitem, the department shall protect and may not display any personally identifiable information of scholarship recipients, their families or legal guardians, or taxpayers;

(b) the distribution of scholarship funds among all eligible schools; and

(c) any other aspect of the program that the department determines would be relevant and useful in making future policy decisions in regard to the program and its continued existence or expansion.

(2) The department shall submit a report of its study to the General Assembly no later than January fifteenth of each year.

HISTORY: 2018 Act No. 247 (H.4077), Section 1, eff May 18, 2018; 2021 Act No. 79 (H.3899), Sections 1 to 4, eff May 17, 2021.

Code Commissioner's Note

At the direction of the Code Commissioner, the amendments to (D)(1) made by 2021 Act No. 79, Sections 2.A and 4, were read together.

Editor's Note

2018 Act No. 247, Section 2, provides as follows:

"SECTION 2. This act takes effect upon approval of the Governor and applies to income tax years beginning after 2017. All tax credits earned as a result of a contribution made to the Educational Credit for the Exceptional Needs Children's Fund in 2018 apply to the cumulative total of twelve million dollars regardless of when in 2018 the contribution is made. All tax credits earned as a result of a tuition payment made by a taxpayer to an eligible school for an exceptional needs child within his custody or care in 2018 apply to the cumulative total of two million dollars regardless of when in 2018 the payment is made. All necessary reports and forms must be submitted as soon as practicable upon the enactment of this act."

Effect of Amendment

2021 Act No. 79, Section 1, in (B), in (3), in the second sentence, deleted ", along with the director of the department," following "public charity", in (4), in the first sentence, substituted "The public charity directors shall administer" for "In concert with the public charity directors, the department shall administer", in the second sentence, substituted "five percent" for "two percent", and in the third sentence, substituted "The public charity" for "The department and the public charity", and in (5), substituted "public charity" for "department".

2021 Act No. 79, Section 2.A, in (D)(1)(a), added the second and third sentences.

2021 Act No. 79, Section 2.B, in (D)(2)(b), in the first sentence, substituted "seventy-five percent" for "sixty percent", and added the third sentence.

2021 Act No. 79, Section 3, in (E)(1)(b), deleted the second, third, and fourth sentences, which related to schools providing individual student test scores on national achievement or state standardized tests.

2021 Act No. 79, Section 4, in (D)(1)(b), added the second sentence.

Time effective

SECTION 5. This act takes effect upon approval by the Governor.

Ratified the 13th day of May, 2021.

Approved the 17th day of May, 2021.

Contact Information

For questions about the application process by which schools apply to participate in the ECENC program, please contact the Education Oversight Committee.

Phone: 803.734.6148

Mail: P.O. Box 11867
Columbia, S.C. 29211

Fax: 803.734.6167

Physical Location:
Edgar A. Brown Building
1205 Pendleton Street, Suite 502
Columbia, SC 29201

Website: <https://eoc.sc.gov/>

For questions about grants awarded to schools on behalf of eligible students attending eligible schools, please contact Exceptional SC.

Appendix D: 2023-2024 Study of the Educational Credit for Exceptional Needs Children Program Completed by the SC Department of Revenue



2023-2024 STUDY OF EDUCATIONAL CREDIT FOR EXCEPTIONAL NEEDS CHILDREN PROGRAM

South Carolina Department of Revenue

300A Outlet Pointe Blvd | Columbia, SC 29210 | dor.sc.gov

January 15, 2025

CONTENTS

| | |
|---------------------|----|
| INTRODUCTION | 2 |
| SCHOLARSHIP FUNDS | 3 |
| DONOR TAX CREDIT | 4 |
| PARENTAL TAX CREDIT | 5 |
| STUDENTS | 6 |
| SCHOOLS | 7 |
| GRANTS BY SCHOOL | 8 |
| DATA BY COUNTY | 12 |
| CONTACTS | 13 |

INTRODUCTION

This study was prepared in accordance with Act 247 of 2018, as amended in 2021, regarding the Educational Credit for Exceptional Needs Children (ECENC) program. The data and information in this study are from tax year 2023 and fiscal year 2024 (FY24) and were provided by the South Carolina Department of Revenue (SCDOR), the South Carolina Education Oversight Committee (EOC), and Exceptional SC.

The ECENC program was reorganized under a proviso in 2016. The program was codified under Act 247 in 2018 and amended in 2021.

SOUTH CAROLINA DEPARTMENT OF REVENUE



The SCDOR oversees the tax credit for Exceptional SC donors as well as the process for eligible parents to apply and receive the Parental Refundable Tax Credit. The SCDOR conducts a study of the ECENC program as prescribed in Act 247 of 2018, amended in 2021.

SOUTH CAROLINA EDUCATION OVERSIGHT COMMITTEE



The EOC determines the eligibility of schools to participate in the ECENC program. Once a school is designated as eligible, it must submit an annual compliance audit as relating to the grants received to maintain eligibility.

EXCEPTIONAL SC



Exceptional SC is a 501(c)(3) that provides scholarship grants to exceptional needs students in South Carolina to attend credentialed private schools. Exceptional SC fundraises, accepts and reviews student grant applications, and awards scholarship grants based on several criteria.

SCHOLARSHIP FUNDS



To be eligible for a scholarship from Exceptional SC, students must be residents of South Carolina, be eligible to attend a public school, complete an application with proof of disability, and attend an EOC approved school. Per statute, scholarships are awarded to incumbents (students who have previously participated in the program) first and then to students who are new to the program.

\$6,202,243

total tax year 2023
donations

1,322

total scholarship
recipients (491 new
and 831 incumbents)

\$4,500

average incumbent
scholarship grant

\$4,500

average new student
scholarship grant

\$5,839,300

total amount of
scholarships
disbursed FY24

FY24 BOARD MEMBERS

Mr. Edward Earwood

Executive Director, South Carolina
Association of Christian Schools

Mrs. Betsy Fanning

Head of School, Trident Academy

Dr. Randy Page

Chief of Staff, Bob Jones University

DONOR TAX CREDIT

Individuals and corporations who pay South Carolina taxes are eligible to donate to Exceptional SC's scholarship fund. Donations to Exceptional SC are claimed as state tax credits.



South Carolina individuals and businesses donate to Exceptional SC.



Donors complete the Exceptional SC Donation Form, and Exceptional SC notifies the SCDOR of the donation.



The SCDOR confirms the credit amount, provided the statewide \$12 million cap has not been met.



Donors claim the credit amount with their SC income taxes using SC1040TC or SC1120TC (code 057).

For tax year 2023, donors were:

- Eligible to claim a dollar-for-dollar credit on state income tax liability **or** entitled to a tax credit against bank taxes imposed pursuant to Chapter 11, Title 12
- Limited to a maximum credit claim that is 75% of their one-year tax liability
- Not allowed to designate a specific student or school as beneficiary
- Limited by a first come, first served annual statewide cap of \$12 million

\$6,202,243
credits approved

\$44,620
average gift per
donor

139
total donors

Data provided by the SCDOR.

PARENTAL TAX CREDIT

Parents or guardians of exceptional needs students attending eligible schools can apply for a refundable tax credit (referred to as Parental Tax Credit or Parental Refundable Credit) toward their South Carolina income tax bill. This credit can only be claimed for actual out-of-pocket spending on tuition, up to \$11,000. There is a statewide cap of \$2 million, with a possibility to be raised to \$5 million. Credits are reserved on a first come, first served basis. For tax year 2023, the credit cap was \$5 million.



Parents make tuition payments to an eligible school for their exceptional needs child.



Parents apply to request the credit. Parents should keep documentation of the child's eligibility for their own records.



The SCDOR confirms the "reservation" of the credit, so long as the statewide cap has not been met.



When the parent files SC income taxes, the Parental Tax Credit amount is used to complete Form I-361.

\$8,464,692

total tax year 2023 credits applied for

997

applicants

575

recipients

\$8,696

average credit per recipient

\$5 million credits approved

Data provided by the SCDOR.

STUDENTS

Act 247 calls for reporting demographic and socio-economic data for participants and their families, including the distribution of scholarship funds by income ranges.

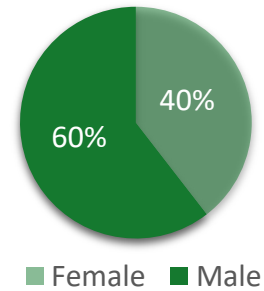
Applicants reported the information below.

PARENTAL TAX CREDIT RECIPIENTS

Data reported by applicants on credit application—not all applicants responded

| Household Income Range | # of Recipients |
|------------------------|-----------------|
| \$0-50,000 | 16 |
| \$50,001-100,000 | 78 |
| \$100,001-150,000 | 117 |
| \$150,001-200,000 | 107 |
| \$200,001-250,000 | 79 |
| \$250,001-300,000 | 37 |
| \$300,001+ | 121 |

| Age | # of Students |
|-------|---------------|
| 5-10 | 199 |
| 11-15 | 285 |
| 16+ | 91 |



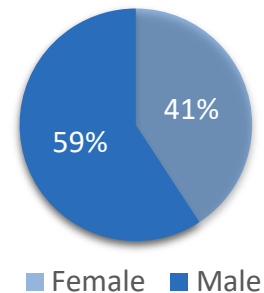
| | | |
|---|--|--|
| \$6,979 average estimated additional expenses of caring for exceptional needs child | 2 average number of children in the home | 1 average number of exceptional needs children in the home |
|---|--|--|

SCHOLARSHIP RECIPIENTS

Data reported by applicants on scholarship application—not all applicants responded

| Household Income Range | # of Recipients |
|------------------------|-----------------|
| \$0-50,000 | 136 |
| \$50,001-100,000 | 314 |
| \$100,001-150,000 | 340 |
| \$150,001-200,000 | 183 |
| \$200,001-250,000 | 101 |
| \$250,001-300,000 | 64 |
| \$300,001+ | 183 |

| Age | # of Students |
|-------|---------------|
| 5-10 | 368 |
| 11-15 | 634 |
| 16+ | 320 |



| | | |
|---|--|--|
| \$6,400 average estimated additional expenses of caring for exceptional needs child | 2 average number of children in the home | 1 average number of exceptional needs children in the home |
|---|--|--|

SCHOOLS

Schools apply to the EOC to participate in the ECENC program. A list of eligible schools is available on the EOC's website (eoc.sc.gov).

To receive an Exceptional SC scholarship grant for an exceptional needs student, the school must:

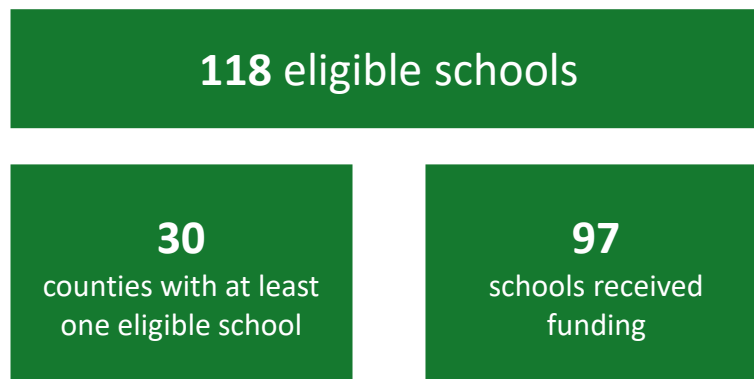
- Be a private primary or secondary school physically located within South Carolina;
- Not discriminate on basis of race, color, or national origin in their admission of students;
- Use a curriculum which includes courses listed in state diploma requirements;
- Use national or state standardized testing and provide test scores to the EOC;
- Have physical facilities that meet local, state, and/or federal laws;
- Be a member of SACS, SCACS, Palmetto Association of Independent Schools, and/or SCISA;
- Complete an annual compliance audit.

Each year, private schools interested in participating in this program must apply for eligibility with the EOC. This application process helps protect students and families by ensuring schools meet and continue to meet the program eligibility requirements.

To be considered for eligibility, a school must initially provide the EOC with:

- An Application to Participate which includes standards the school has met or intends to meet and reporting requirements in compliance with state law,
- Assessment score data from the previous school year,
- A Statement of Services with information on the services and/or resources exceptional needs students receive and what needs those services are geared toward,
- The number of grants and funding received in the previous school year,
- A copy of an audit of the organization's financial statements relating to the grants received.

School eligibility for participation occurs during the school year. The information provided by the EOC to the SCDOR is based on the fiscal year.



Data provided by the EOC and Exceptional SC.

GRANTS BY SCHOOL

The EOC approved 118 schools to participate in the FY24 ECENC program. The following 97 schools received funding from Exceptional SC grants issued for scholarship recipients.

| ELIGIBLE SCHOOL | NUMBER OF GRANTS | VALUE OF GRANTS ISSUED |
|--|------------------|------------------------|
| All Saints Episcopal Day School | <10 | \$14,500 |
| Anderson Christian School | <10 | \$16,500 |
| Ashley Hall | <10 | \$56,700 |
| Beaufort Academy | <10 | \$7,800 |
| Ben Lippen School | 19 | \$79,500 |
| Bishop England High School | 33 | \$145,200 |
| Blessed Sacrament School | <10 | \$15,300 |
| Bob Jones Academy | 31 | \$62,000 |
| Calhoun Academy | <10 | \$6,500 |
| Calvary Christian School—Greer | <10 | \$8,600 |
| Camden Military Academy | <10 | \$38,000 |
| Camperdown Academy | 146 | \$989,600 |
| Cardinal Newman School | 39 | \$178,600 |
| Carolina Christian Academy | <10 | \$1,100 |
| Chabad Jewish Academy | <10 | \$6,600 |
| Charleston Collegiate School | 13 | \$60,000 |
| Charleston Day School | <10 | \$14,800 |
| Christ Church Episcopal School | 72 | \$391,400 |
| Christ Our King-Stella Maris Catholic School | 28 | \$62,000 |
| Christian Hope Academy | <10 | \$2,600 |
| Clarendon Hall School | <10 | \$2,400 |
| Coastal Christian Preparatory School | <10 | \$7,300 |
| Colleton Preparatory School | 19 | \$57,000 |
| Cross Schools | <10 | \$3,400 |
| Crown Leadership Academy | 12 | \$28,100 |
| Cutler Jewish Day School | <10 | \$2,600 |

GRANTS BY SCHOOL

| ELIGIBLE SCHOOL | NUMBER OF GRANTS | VALUE OF GRANTS ISSUED |
|--|------------------|------------------------|
| Divine Redeemer Catholic School | <10 | \$8,200 |
| Dorchester Academy | <10 | \$16,800 |
| Einstein Academy | <10 | \$16,200 |
| First Presbyterian Academy | 22 | \$73,444 |
| Five Oaks Academy | <10 | \$3,300 |
| Glenforest School | 44 | \$217,800 |
| Grace Christian School | <10 | \$34,000 |
| Hammond School | <10 | \$50,300 |
| Hampton Park Christian School | 16 | \$32,800 |
| Heathwood Hall Episcopal School | 25 | \$142,600 |
| Hidden Treasure Christian School | 38 | \$224,200 |
| Hilton Head Christian Academy | 11 | \$53,300 |
| Hilton Head Preparatory School | <10 | \$3,200 |
| HOPE Academy | 42 | \$134,400 |
| Hope Christian Academy | <10 | \$31,500 |
| James Island Christian School | <10 | \$7,900 |
| John Paul II Catholic School | 10 | \$41,000 |
| Mason Preparatory School | <10 | \$35,400 |
| Mead Hall Episcopal School | <10 | \$6,900 |
| Miracle Academy Preparatory School | <10 | \$13,200 |
| Mitchell Road Christian Academy | 24 | \$77,100 |
| Nativity Catholic School | <10 | \$8,300 |
| Northside Christian Academy | 12 | \$23,300 |
| Oakbrook Preparatory School | 10 | \$34,700 |
| Oconee Christian School | <10 | \$9,400 |
| Orangeburg Preparatory School | <10 | \$6,000 |
| Our Lady of Peace Catholic School | 17 | \$30,600 |
| Our Lady of the Rosary Catholic School | 11 | \$35,000 |

GRANTS BY SCHOOL

| ELIGIBLE SCHOOL | NUMBER OF GRANTS | VALUE OF GRANTS ISSUED |
|---|------------------|------------------------|
| Palmetto Christian - Greenwood | <10 | \$7,200 |
| Palmetto Christian Academy Mt. Pleasant | 23 | \$75,900 |
| Patrick Henry Academy | 22 | \$28,600 |
| Pee Dee Academy | <10 | \$34,000 |
| Porter-Gaud School | <10 | \$56,137 |
| Prince of Peace Catholic School | <10 | \$14,500 |
| Providence Classical School of Rock Hill | <10 | \$15,700 |
| Sandhills School | 72 | \$498,800 |
| Southside Christian School | 60 | \$232,228 |
| Spartanburg Christian Academy | <10 | \$2,000 |
| Spartanburg Day School | 19 | \$126,400 |
| St. Andrew Catholic School | <10 | \$12,400 |
| St. Anne Catholic School - Rock Hill | <10 | \$9,800 |
| St. Anthony Catholic School - Florence | <10 | \$8,000 |
| St. Anthony of Padua Catholic School | <10 | \$9,900 |
| St. Elizabeth Ann Seton Catholic High | <10 | \$5,000 |
| St. Francis by the Sea Catholic School | <10 | \$14,400 |
| St. Gregory the Great Catholic School | <10 | \$7,100 |
| St. John's Christian Academy | 10 | \$15,987 |
| St. John Catholic School - Charleston | 14 | \$42,000 |
| St. John Neuman Catholic School | <10 | \$19,800 |
| St. Joseph Catholic School - Anderson | <10 | \$6,500 |
| St. Joseph Catholic School - Columbia | 15 | \$36,500 |
| St. Joseph Catholic School - Greenville | 20 | \$89,350 |
| St. Michael Catholic School | <10 | \$5,400 |
| St. Peter's Catholic School - Beaufort | <10 | \$3,700 |
| Step of Faith Christian Academy | <10 | \$1,300 |
| Sumter Christian School | <10 | \$7,200 |

GRANTS BY SCHOOL

| ELIGIBLE SCHOOL | NUMBER OF GRANTS | VALUE OF GRANTS ISSUED |
|---------------------------------------|------------------|------------------------|
| Temple Christian High School | <10 | \$3,600 |
| The Chandler School | 50 | \$296,900 |
| The Charleston Catholic School | <10 | \$27,000 |
| The Complete Student | 16 | \$29,600 |
| The Cooper School | <10 | \$20,100 |
| The King's Academy | 17 | \$60,000 |
| Thomas Hart Academy | <10 | \$14,500 |
| Thomas Heyward Academy | <10 | \$15,300 |
| Thomas Sumter Academy | <10 | \$9,400 |
| Timmerman School | <10 | \$13,800 |
| Trident Academy | 44 | \$357,800 |
| Westgate Christian School | <10 | \$1,400 |
| Westminister Catawba Christian School | 19 | \$73,060 |

Data provided by Exceptional SC.

DATA BY COUNTY

The chart below provides the number of eligible schools, Exceptional SC scholarship recipients, and Parental Tax Credit recipients by county. For FY24, 16 of South Carolina's 46 counties did not have an eligible school participate in the program.

| SC County | # of Grant Recipients | # of Credit Recipients | # of Eligible Schools |
|--------------|-----------------------|------------------------|-----------------------|
| Abbeville | 0 | 0 | 0 |
| Aiken | 0 | <10 | 3 |
| Allendale | 0 | 0 | 0 |
| Anderson | 26 | <10 | 5 |
| Bamberg | 0 | 0 | 0 |
| Barnwell | 0 | 0 | 0 |
| Beaufort | 33 | <10 | 8 |
| Berkeley | 61 | <10 | 4 |
| Calhoun | 12 | 0 | 1 |
| Charleston | 359 | 20 | 18 |
| Cherokee | 0 | 0 | 0 |
| Chester | <10 | 0 | 1 |
| Chesterfield | 0 | 0 | 0 |
| Clarendon | <10 | 0 | 2 |
| Colleton | 28 | <10 | 1 |
| Darlington | <10 | 0 | 1 |
| Dillon | 0 | 0 | 0 |
| Dorchester | 10 | <10 | 2 |
| Edgefield | 0 | 0 | 0 |
| Fairfield | 0 | 0 | 0 |
| Florence | 27 | 0 | 4 |
| Georgetown | 0 | <10 | 1 |
| Greenville | 333 | 128 | 19 |

| SC County | # of Grant Recipients | # of Credit Recipients | # of Eligible Schools |
|--------------|-----------------------|------------------------|-----------------------|
| Greenwood | 0 | 0 | 1 |
| Hampton | 21 | 0 | 1 |
| Horry | 20 | 0 | 7 |
| Jasper | 10 | 0 | 3 |
| Kershaw | <10 | <10 | 1 |
| Lancaster | <10 | 0 | 2 |
| Laurens | 0 | 0 | 0 |
| Lee | 0 | 0 | 0 |
| Lexington | 11 | 10 | 3 |
| Marion | <10 | <10 | 1 |
| Marlboro | 0 | 0 | 0 |
| McCormick | 0 | 0 | 0 |
| Newberry | <10 | 0 | 1 |
| Oconee | <10 | 0 | 2 |
| Orangeburg | <10 | 0 | 1 |
| Pickens | <10 | <10 | 1 |
| Richland | 199 | 39 | 13 |
| Saluda | 0 | 0 | 0 |
| Spartanburg | 72 | 12 | 5 |
| Sumter | 11 | 0 | 3 |
| Union | 0 | 0 | 0 |
| Williamsburg | 0 | 0 | 0 |
| York | 37 | <10 | 3 |

Data provided by Exceptional SC (grant recipients), the SCDOR (credit recipients), and the EOC (schools).

CONTACTS

SOUTH CAROLINA DEPARTMENT OF REVENUE

Hartley Powell

Director
803-898-5040
Director@dor.sc.gov

Meredith Cleland

Government Services
803-898-5402
Meredith.Cleland@dor.sc.gov

Bonnie Swingle

803-898-5281
Bonnie.Swingle@dor.sc.gov

SOUTH CAROLINA EDUCATION OVERSIGHT COMMITTEE

Dana Yow

Executive Director
803-734-6164
danay@eoc.sc.gov

EXCEPTIONAL SC

Edward Earwood

Chairman of the Board
843-513-5010
earwood@christianeducation.org

| | | | | | | | | | | | | |
|----------------------------------|-------|---------------------|-------|----------|-------|-------------------------|-------|-----|-----|-------------|--|--|
| Glenforest School | K-12 | Fast Bridge | 10-11 | PSAT | 11-12 | ACT | 11-12 | SAT | K-8 | SRA Mastery | | |
| Greenville Classical Academy | 3-9 | Iowa Assessment | 10-11 | PSAT | 10 | Classical Learning Test | 11-12 | CLT | | | | |
| Hammond School | 3-8 | ERB's CTP | 9-11 | PSAT | 12 | SAT | | | | | | |
| Hampton Park Christian School | K5-12 | Iowa Assessment | | | | | | | | | | |
| Harvest Community School | 3-11 | Iowa Assessment | | | | | | | | | | |
| Hawthorne Christian Academy | K-12 | Iowa Assessment | 9-11 | PSAT | 10-12 | SAT | | | | | | |
| Heathwood Hall Episcopal School | 2-8 | ERB's CTP | 9-11 | PSAT | 11 | SAT | 11 | ACT | | | | |
| Hidden Treasure Christian School | K-12 | Woodcock-Johnson IV | | | | | | | | | | |
| Hilton Head Christian Academy | K-9 | MAP | 8-9 | PSAT 8/9 | 8-11 | PSAT/NMSQT | 12 | SAT | | AP | | |

| | | | | | | | | | | | | |
|------------------------------------|------|-----------------|-------|-----------------|-------|------------|-------|------|------|-----|--|--|
| Miracle Academy Preparatory School | K5-7 | Stanford 10 | | | | | | | | | | |
| Mitchell Road Christian Academy | K-8 | MAP/Growth | | | | | | | | | | |
| Montessori School of Anderson | 2-9 | MAP | 4-8 | Stanford 10 | 10-12 | ACT | 8-11 | PSAT | 12 | SAT | | |
| Montessori School of Florence | 5K-1 | MAP Growth | 2-6 | MAP (Language) | | | | | | | | |
| Nativity Catholic School | K-8 | MAP | | | | | | | | | | |
| Newberry Academy | K5 | CogAT | 1-8 | Iowa Assessment | 8-10 | PSAT | 11-12 | SAT | | | | |
| Northside Christian Academy | K-12 | Iowa | 11-12 | SAT | | | | | | | | |
| Oakbrook Preparatory School | 3-8 | ERB CTP | 8-11 | PSAT | 8-12 | AP | 8-12 | SAT | 8-12 | ACT | | |
| Oconee Christian Academy | K-11 | Iowa Assessment | 8-9 | PSAT 8/9 | 8-9 | PreACT 8/9 | | | | | | |

| | | | | | | | | | | | | |
|--|------|------------|-------|--------|-------|------------|-------|------------|----|---------|--|--|
| Orangeburg Preparatory Schools, Inc. | 3-9 | MAP | 10-11 | PSAT | | | | | | | | |
| Our Lady of Peace Catholic School | K-8 | MAP | | | | | | | | | | |
| Our Lady of the Rosary Catholic School | K-11 | MAP | 7-11 | PSAT | 12 | SAT | 11-12 | ACT | | | | |
| Palmetto Christian Academy of Greenwood (PCAG) | K5-8 | Iowa/CogAT | 8-10 | PSAT | 11 | PSAT/NMSQT | 12 | SAT | | | | |
| Palmetto Christian Academy-Mt. Pleasant | K-7 | MAP | 8-9 | PSAT | 10-11 | PSAT/NMSQT | | | | | | |
| Patrick Henry Academy | 2-7 | ERB-CTP 5 | 8-11 | PSAT | 10-12 | SAT | 10-12 | ACT | | | | |
| Pee Dee Academy | 1-11 | MAP | 11-12 | SAT | 8-11 | PSAT | | | | | | |
| Porter-Gaud School | 3-8 | ERB-CTP 5 | 9 | PSAT 9 | 10 | PreACT | 11 | PSAT/NMSQT | 12 | SAT/ACT | | |

| | | | | | | | | | | | | |
|--|-----|---------------------|------|---------|-------|------------|-------|------------|----|-----|--|--|
| Prince of Peace Catholic School | K-8 | MAP | | | | | | | | | | |
| Providence Classical School of Rock Hill | K-8 | Iowa Assessment | 7-11 | PSAT 10 | 11-12 | SAT | | | | | | |
| Red Rose City Academy | | | | | | | | | | | | |
| Ridge Christian Academy | | | | | | | | | | | | |
| Riverpointe Christian Academy | | | | | | | | | | | | |
| Sandhills School | 1-8 | Woodcock-Johnson IV | 9-12 | PACT | | | | | | | | |
| Southside Christian School | K-8 | MAP | 9 | PreACT | 10-11 | PSAT | | | | | | |
| Spartanburg Christian Academy | K-8 | Stanford 10 | 9 | PreACT | 10-11 | PSAT 10/11 | | | | | | |
| Spartanburg Day School | 1-4 | MAP | 3-7 | ERB | 8-9 | PSAT 8/9 | 10-11 | PSAT/NMSQT | 12 | SAT | | |

| | | | | | | | | | | | | |
|--------------------------------|---------------|----------------------------------|-------------------|--------------|----------------|--------------------|-----------|------------|--|--|--|--|
| Temple Christian Academy | | | | | | | | | | | | |
| Temple Christian High School | 6-7, 9-10, 12 | <i>Iowa Assessment</i> | | | | | | | | | | |
| The Chandler School | <i>K-8</i> | <i>Stanford 10</i> | <i>1, 3, 5, 7</i> | <i>OLSAT</i> | <i>3, 7, 8</i> | <i>Stanford 10</i> | | | | | | |
| The Charleston Catholic School | <i>K-8</i> | <i>MAP</i> | | | | | | | | | | |
| The Complete Student | <i>5-9</i> | <i>Wilson Reading Assessment</i> | <i>10-12</i> | <i>ACT</i> | | | | | | | | |
| The Cooper School | <i>3-8</i> | <i>ERB's CTP5</i> | | | | | | | | | | |
| The King's Academy | <i>2-8</i> | <i>Iowa Flex</i> | <i>9-11</i> | <i>PSAT</i> | <i>12</i> | <i>SAT</i> | <i>12</i> | <i>ACT</i> | | | | |
| The Timmerman School | <i>1-8</i> | <i>Stanford 10</i> | | | | | | | | | | |
| Thomas Hart Academy | <i>1-8</i> | <i>Iowa</i> | | | | | | | | | | |
| Thomas Heyward Academy | <i>3-7</i> | <i>IOWA TBS</i> | <i>3, 5, 7</i> | <i>OLSAT</i> | <i>10</i> | <i>PSAT/NMSQT</i> | <i>11</i> | <i>SAT</i> | | | | |

| | | | | | | | | | | | | | |
|--------------------------------------|-------|------------------|------|----------|-------|------------|----|-----|--|--|--|--|--|
| Thomas Sumter Academy, Inc. | 1-8 | Terra Nova | 9-11 | PSAT | 11-12 | SAT | | | | | | | |
| Trident Academy | 3-12 | Gates MacGinitie | 3-12 | WRAT | | | | | | | | | |
| Trinity Christian Educational School | K-12 | Stanford 10 | | | | | | | | | | | |
| Valorous Academy | K-12 | Iowa Form E Core | | | | | | | | | | | |
| Victory Bible Christian School | | | | | | | | | | | | | |
| Westgate Christian School | K5-11 | Iowa Assessment | | | | | | | | | | | |
| Westminster Catawba Christian School | 3-8 | Iowa | 9 | PSAT 8/9 | 10-11 | PSAT/NMSQT | 12 | SAT | | | | | |

Appendix F

Document C
Assessment Data

Educational Credit for Exceptional Needs Children (ECENC) Program
2024-25

Independent School Name: Camperdown Academy

School-level Assessment Results

| Grade | English Language Arts (Reading) | Mathematics |
|-----------------|--|--------------------|
| 1 st | Gates-MacGinitie Reading Tests | GMADE* |
| 2 nd | Gates-MacGinitie Reading Tests | GMADE |
| 3 rd | Gates-MacGinitie Reading Tests | GMADE |
| 4 th | Gates-MacGinitie Reading Tests | GMADE |
| 5 th | Gates-MacGinitie Reading Tests | GMADE |
| 6 th | Gates-MacGinitie Reading Tests | GMADE |
| 7 th | Gates-MacGinitie Reading Tests | GMADE |
| 8 th | Gates-MacGinitie Reading Tests | GMADE |


*Group Mathematics Assessment and Diagnostic Evaluation (GMADE)

Each grade level had more than 10 students.

Staff Person Responsible for Assessment Information

Name Suzanna Greer
Title Head/Fellow of Orton-Gillingham Programs
Phone 864-244-8899
Email sgreer@camperdown.org

Individual Submitting School-level Assessment Information

Signature 
Date August 8, 2024
Printed Name Dan Blanch
Title Head of School
Email dblanch@camperdown.org

**Camperdown Academy
Assessment Results for Spring 2024**

**Reading Scores
Gates-MacGinitie Reading Tests**

| Grade | Number of Students | Mean Scaled Score | Normal Curve Equivalent of Mean Scaled Score | Percentile Rank of Mean Scaled Score |
|-------|--------------------|-------------------|--|--------------------------------------|
| 1st | 13 | 352 | 35 | 24 |
| 2nd | 19 | 421 | 44 | 39 |
| 3rd | 33 | 447 | 38 | 28 |
| 4th | 36 | 472 | 36 | 26 |
| 5th* | 37 | 491 | 36 | 25 |
| 6th | 12 | 523 | 47 | 45 |
| 7th | 18 | 525 | 44 | 39 |
| 8th | 16 | 546 | 55 | 59 |

**Math Scores
GMADE**

| Grade | Number of Students | Mean Standard Score | Normal Curve Equivalent of Mean Standard Score | Percentile Rank of Mean Standard Score |
|-------|--------------------|---------------------|--|--|
| 1st | 13 | 88 | 33 | 21 |
| 2nd | 19 | 96 | 44 | 39 |
| 3rd | 33 | 102 | 53 | 55 |
| 4th | 36 | 102 | 53 | 55 |
| 5th | 36 | 99 | 49 | 47 |
| 6th* | 13 | 101 | 51 | 53 |
| 7th | 18 | 88 | 33 | 21 |
| 8th | 16 | 92 | 39 | 30 |

*One 5th grade student was enrolled in 6th grade math. His assessments matched his grade placement for each subject.

Document C

Assessment Data

Educational Credit for Exceptional Needs Children (ECENC) Program

2024-25

Independent School Name: Einstein Academy

A school applying for participation in the ECENC Program must provide directly to the EOC by **September 1** the following:

School-level Assessment Results

In the chart below, please list the NAME of each national achievement test that was administered and the grade in which the test is administered for the prior school year. Examples include: TerraNova, Stanford 10, Iowa Test of Basic Skills, MAP, PSAT, SAT, ACT, etc.

For schools that specifically exist to meet the needs of only exceptional needs students with documented disabilities, please document how the school documents students' academic and social development:

| Grade | English language arts (Reading) | Mathematics | Other |
|---------------------|---------------------------------|-------------|-------|
| 4 th (1) | MAP | MAP | |
| 5 th (2) | MAP | MAP | |
| 6 th (1) | MAP | MAP | |
| 7 th (2) | MAP | MAP | |

For each national assessment listed above and for each grade with at least 10 students tested, please attach the results from the prior school year. In reporting the achievement level, the school can use mean/median scale scores, national percentile rankings, stanines, grade equivalents, etc.

The individual submitting school-level assessment information must sign below.

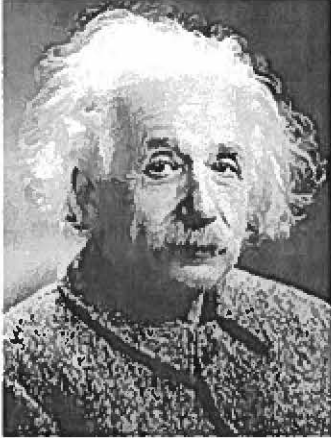
Signature: Mary Olsen

Date: 8-26-24

Print Name of Signature Above: Mary Olsen

Title: Administrator

Email: Molsen@einsteinacademysc.org



'Einstein Academy for children who think and learn differently'

Einstein Academy

@ First Baptist Church

Suite D-100, 847 Cleveland Street

Greenville, SC 29601 (864) 269-8999 Email:

info@einsteinacademysc.org

<http://einsteinacademysc.org>

8-28-24

To Whom It May Concern,

Einstein Academy cannot comply with the ECENC Reporting Requirement to the EOC for SchoolLevel Assessment Data. The test that was administered. MAPs in Math and MAPs in English/Language Arts had less than 10 students in each grade level for SY2022-23.

Sincerely,

Mary Olsen

Mary Olsen

Document C
Assessment Data

Educational Credit for Exceptional Needs Children (ECENC) Program

2024-25

Independent School Name: Glenforest School

A school applying for participation in the ECENC Program must provide directly to the EOC by **September 1** the following:

School-level Assessment Results

In the chart below, please list the **NAME** of each national achievement test that was administered and the grade in which the test is administered for the prior school year. Examples include: *TerraNova, Stanford 10, Iowa Test of Basic Skills, MAP, PSAT, SAT, ACT, etc.*

For schools that specifically exist to meet the needs of only exceptional needs students with documented disabilities, please document how the school documents students' academic and social development.

| Grade | English language arts (Reading) | Mathematics | Other |
|-------|------------------------------------|-------------|-------|
| K-12 | FastBridge | FastBridge | |
| 10-11 | PSAT | PSAT | |
| 11-12 | ACT, SAT | ACT, SAT | |
| K-8 | SRA Mastery | SRA Mastery | |

For each national assessment listed above and for each grade with at least 10 students tested, please attach the results from the prior **school year**. The manual provides a template for schools to use in reporting mean scale scores, national percentile rankings, etc.

The individual submitting school-level assessment information must sign below.

Signature: Heather Miller

Date: 8-16-24

Print Name of Signature Above: Heather Miller

Title: Head of School

Email: hmiller@glenforest.org



August 16, 2024

To ExceptionalSC and the SC Education Oversight Committee,

Glenforest School had the enrollment of 64 students for the 2024-2025 school year. In our K-12 program, we had no grade level with more than 10 students. Glenforest School currently provides FastBridge Benchmark and Progress Monitoring for math, reading and social/emotional growth. Students in our GROW program who are non-verbal are given Norm-Referenced SRA Mastery Test along with documentation and other evaluations through our contractual Speech Therapy, Occupational Therapy, and ABA Therapy treatment plans for academic, behavior, social, and language growth.

Sincerely,

Heather Miller
Head of School
Glenforest School
hmiller@glenforest.org
803-796-7622

Document C
Assessment Data

Educational Credit for Exceptional Needs Children (ECENC) Program

2024-25

Independent School Name: Hidden Treasure Christian School

A school applying for participation in the ECENC Program must provide directly to the EOC by **September 1** the following:

School-level Assessment Results

In the chart below, please list the NAME of each national achievement test that was administered and the grade in which the test is administered for the prior school year. Examples include: *TerraNova, Stanford 10, Iowa Test of Basic Skills, MAP, PSAT, SAT, ACT, etc.*

For schools that specifically exist to meet the needs of only exceptional needs students with documented disabilities, please document how the school documents students' academic and social development.

| Grade | English language arts (Reading) | Mathematics | Other |
|--------------|--|--|--|
| K-12 | Woodcock-Johnson IV | Woodcock-Johnson IV | Woodcock-Johnson IV |
| | <i>(Achievement, Cognitive, and Oral Language)</i> | <i>(Achievement, Cognitive, and Oral Language)</i> | <i>(Achievement, Cognitive, and Oral Language)</i> |
| | | | |

For each national assessment listed above and for each grade with at least 10 students tested, please attach the results from the prior school year. The manual provides a template for schools to use in reporting mean scale scores, national percentile rankings, etc.

The individual submitting school-level assessment information must sign below.

Signature: _____

Date: 8-15-24

Print Name of Signature Above: JACKIE MATHEUS

Title: Administrative Assistant

Email: jmatheus@hiddentreasure.org

HIDDEN TREASURE CHRISTIAN SCHOOL, TAYLORS SC - RECIPIENTS OF EXCEPTIONALSC FOR 2023-24

2023-24 School Results for Woodcock/Johnson Psycho-Educational Battery IV

Results Taken From the Achievement Section of the WCJIV

Grade Equivalents Being Used

| GRADE (HTCS IS PERFORMANCE BASED--NOT GRADE PLACEMENT) | BASIC READING SKILLS GE | BROAD WRITTEN LANGUAGE GE | BROAD MATHEMATICS GE |
|--|-----------------------------------|-------------------------------------|--------------------------------|
| 1 | >17.9 | >17.9 | >17.9 |
| 2 | 5.8 | 4 | 3.4 |
| 3 | 6.4 | 6.8 | 8.5 |
| 4 | 5.8 | 4.9 | 4.4 |
| 5 | 9.2 | 6.5 | 8.4 |
| 6 | 13 | >17.9 | 9.5 |
| 7 | 6.6 | 8.5 | 5.4 |
| 8 | 3.6 | 3.2 | 4.2 |
| 9 | 3.4 | 2.1 | 5.4 |
| 10 | 1.5 | 2.8 | 2.1 |
| 11 | 2.4 | 4.3 | 5.8 |
| 12 | 6.2 | 6.8 | 8.5 |
| 13 | | | |
| 14 | | | |
| 15 | | | |
| 16 | | | |
| 17 | | | |
| 18 | | | |
| 19 | | | |
| 20 | | | |
| 21 | | | |
| 22 | | | |
| 23 | | | |

Document C
Assessment Data

Educational Credit for Exceptional Needs Children (ECENC) Program

2024-25

Independent School Name: Hope Academy

A school applying for participation in the ECENC Program must provide directly to the EOC by September 1 the following:

School-level Assessment Results

In the chart below, please list the NAME of each national achievement test that was administered and the grade in which the test is administered for the prior school year. Examples include: *TerraNova, Stanford 10, Iowa Test of Basic Skills, MAP, PSAT, SAT, ACT, etc.*

For schools that specifically exist to meet the needs of only exceptional needs students with documented disabilities, please document how the school documents students' academic and social development.

| Grade | English language arts (Reading) | Mathematics | Other |
|-------|------------------------------------|-------------|-------|
| | | | |
| | | | |
| | | | |
| | | | |

For each national assessment listed above and for each grade with at least 10 students tested, please attach the results from the prior school year. The manual provides a template for schools to use in reporting mean scale scores, national percentile rankings, etc.

The individual submitting school-level assessment information must sign below.

Signature: 

Date: 8/21/2024

Print Name of Signature Above: David Hill

Title: Education Coordinator

Email: davidhill@projecthopesc.org

Project

HOPE
Foundation

David Hill

Project Hope Foundation, Hope Academy

424 N. Highway 101 Landrum, SC 29536

8/21/2024

To whom it may concern,

Hope Academy serves students across the autism spectrum from students who are ready to mainstream to students who require significant support to build communication, social, behavioral, and academic skills. In order to provide classrooms that provide the support our students need, we have three tiers of classes: Groundbreakers, Pathfinders, and Trailblazer.

Students in our Pathfinder and Trailblazer classrooms take the NWEA/MAP test. Due to our unique service model and the needs of the population we serve, all of our classes maintain a small ratio of students to teachers that falls below 10 students. All of our students also have their academic, social, and behavioral goals assessed, tracked, and documented according to their ABA treatment plan during their daily class and ABA sessions. Teachers also utilize curriculum benchmark assessments to track student progress. They also create academic goals for each student based on the SC State Standards and monitor student progress utilizing various curriculum-based assessments.

Students in our Groundbreakers program participate in an individualized education program with ABA support in the classroom. These students' academic, social, behavioral, and vocational goals are tracked according to their individual treatment plans, assessed and documented daily by their RBT therapist, and shared with parents monthly via team meetings in which that student's BCBA, RBT therapists, parents, and teachers participate. These treatment plans are maintained as part of their student record. Please do not hesitate



to reach out for further information or clarification on our assessment and progress monitoring processes.

Thank you.

A handwritten signature in black ink, appearing to read "David Hill". The signature is fluid and cursive.

David Hill
Education Coordinator
Hope Academy

Document C
Assessment Data

Educational Credit for Exceptional Needs Children (ECENC) Program

2024-25

Independent School Name: Hope Christian Academy

A school applying for participation in the ECENC Program must provide directly to the EOC by September 1 the following:

School-level Assessment Results

In the chart below, please list the NAME of each national achievement test that was administered and the grade in which the test is administered for the prior school year. Examples include: TerraNova, Stanford 10, Iowa Test of Basic Skills, MAP, PSAT, SAT, ACT, etc.

For schools that specifically exist to meet the needs of only exceptional needs students with documented disabilities, please document how the school documents students' academic and social development.

| Grade | English language arts (Reading) | Mathematics | Other |
|---------|------------------------------------|----------------|-------|
| 5th/6th | Woodcock Johnson IV | Woodcock J. IV | |
| 9th | " | " | |
| 10th | " | " | |
| 11th | " | " | |
| 12th | " | " | |

For each national assessment listed above and for each grade with at least 10 students tested, please attach the results from the prior school year. The manual provides a template for schools to use in reporting mean scale scores, national percentile rankings, etc.

The individual submitting school-level assessment information must sign below.

Signature: Caroline Dodd

Date: 7-17-24

Print Name of Signature Above: Caroline Dodd

Title: Director

Email: caroline.dodd@hotmail.com

HCA

HOPE CHRISTIAN
ACADEMY

Officers

Ethan Ware, President
Kay Ware, Vice President
Stephanie Estep Cordum,
Secretary/Treasurer

Board of Directors

Mr. Edward Earwood
Mrs. Derrae Handford
Mr. Joshua Craft
Mrs. Jill Sinclair
Mr. Ethan Ware
Mrs. Kay Ware

Past Board Members

Mr. Al Martin, Chairman
Mr. Jud Smith
Ms. Cathy Dreher Tizemski
Mr. Ken East
Dr. Wendell Estep
Mr. Robert Graham
Ms. Dianne Gregory
Mark Posey, PhD
Mr. Mike Ragan, CFP, CWPP

Director

Mrs. Caroline Dodd

Educational Consultant

Ms. Jill Sinclair, M. Ed

Phone:
803-318-6357
803-351-2168
803-790-4028

Mailing Address:
545 Alexander Cir.
Columbia, SC, 29206

Location:
Grace Christian School
416 Denham Ave.
West Columbia, SC 29169
Web: www.hearoday.org

School-level Assessment Results Hope Christian Academy 2023-2024

Hope Christian Academy specifically exists to meet the needs of only exceptional needs students with documented disabilities. We document students' academic and social development by administering the Woodcock-Johnson IV each year. For the 2023-2024 school year no grade tested had 10 or more students. We did not have 10 students in any given grade level. We only had 11 students total in our school.

Hope Christian Academy will not be providing the SC Education Oversight Committee with any information that may be personally identifiable as described in Act 247 of 2018 and the Family Educational Rights and Privacy Act.

Caroline Dodd
Director
Hope Christian Academy
carolinesdodd@hotmail.com

Document C
Assessment Data

Educational Credit for Exceptional Needs Children (ECENC) Program

2024-25

Independent School Name: Sandhills School

A school applying for participation in the ECENC Program must provide directly to the EOC by **September 1** the following:

School-level Assessment Results

In the chart below, please list the **NAME** of each national achievement test that was administered and the grade in which the test is administered for the prior school year. Examples include: *TerraNova, Stanford 10, Iowa Test of Basic Skills, MAP, PSAT, SAT, ACT, etc.*

For schools that specifically exist to meet the needs of only exceptional needs students with documented disabilities, please document how the school documents students' academic and social development.

| Grade | English language arts (Reading) | Mathematics | Other |
|-------|------------------------------------|-------------|-------|
| 1-8 | Woodcock Johnson IV | → | |
| 9-12 | PACT | → | |
| | | | |
| | | | |
| | | | |

For each national assessment listed above and for each grade with at least 10 students tested, please attach the results from the prior school year. The manual provides a template for schools to use in reporting mean scale scores, national percentile rankings, etc.

The individual submitting school-level assessment information must sign below.

Signature: Erica Ludovina

Date: May 21, 2024

Print Name of Signature Above: Erica Ludovina

Title: Dean of Curriculum & Engagement

Email: ERICA.LUDOVINA@SANDHILLS.SCHOOL

**3rd Grade
Woodcock Johnson IV, Achievement Results, 2024**

| English A) Letter-Word Identification | | |
|--|---------------------|-------------------|
| Grade-Equivalent | Scaled Score | Percentile |
| 2.9 | 92 | 29 |
| 1.3 | 70 | 2 |
| 4.3 | 105 | 63 |
| 2.9 | 93 | 32 |
| 2.4 | 89 | 22 |
| 1.9 | 82 | 11 |
| 2.3 | 88 | 21 |
| 3.4 | 97 | 42 |
| 2.6 | 89 | 24 |
| 1.2 | 69 | 2 |
| 2.0 | 82 | 11 |
| 2.9 | 93 | 32 |
| 1.9 | 80 | 9 |
| 2.9 | 92 | 29 |
| 9.7 | 126 | 96 |
| 3.6 | 99 | 48 |
| 3.0 | 90 | 30 |

| English B) Spelling | | |
|----------------------------|---------------------|-------------------|
| Grade-Equivalent | Scaled Score | Percentile |
| 2.2 | 84 | 14 |
| 2.0 | 84 | 14 |
| 5.7 | 116 | 85 |
| 2.0 | 84 | 14 |
| 1.8 | 81 | 11 |
| 2.0 | 84 | 14 |
| 3.5 | 99 | 48 |
| 3.5 | 98 | 44 |
| 3.1 | 94 | 35 |
| 1.3 | 74 | 4 |
| 1.5 | 75 | 5 |
| 2.4 | 88 | 21 |
| 2.0 | 83 | 12 |

| | | |
|------------|-----------|-----------|
| 2.2 | 84 | 14 |
| 6.5 | 118 | 88 |
| 4.5 | 76 | 6 |
| 2.9 | 89 | 27 |

| English C) Passage Comprehension | | |
|---|---------------------|-------------------|
| Grade-Equivalent | Scaled Score | Percentile |
| 2.7 | 92 | 29 |
| 1.8 | 79 | 8 |
| 2.9 | 95 | 37 |
| 3.6 | 99 | 49 |
| 1.8 | 79 | 8 |
| 1.4 | 73 | 3 |
| 2.5 | 91 | 28 |
| 4.5 | 105 | 62 |
| 2.4 | 88 | 21 |
| 1.2 | 66 | 1 |
| 1.7 | 76 | 5 |
| 3.3 | 97 | 43 |
| 2.7 | 92 | 30 |
| 2.7 | 92 | 29 |
| 5.1 | 107 | 68 |
| 2.7 | 93 | 32 |
| 2.7 | 89 | 28 |

| English D) Writing Samples | | |
|-----------------------------------|---------------------|-------------------|
| Grade-Equivalent | Scaled Score | Percentile |
| 3.5 | 98 | 45 |
| 4.2 | 103 | 58 |
| 3.5 | 99 | 47 |
| 3.8 | 101 | 52 |
| 2.6 | 94 | 34 |
| 2.9 | 96 | 40 |
| 5.8 | 110 | 75 |
| 6.4 | 111 | 77 |
| 3.5 | 99 | 46 |
| 5.2 | 107 | 69 |
| 7.9 | 116 | 86 |

| | | |
|------------|------------|-----------|
| 7.1 | 114 | 83 |
| 3.5 | 99 | 46 |
| 3.5 | 98 | 45 |
| 7.1 | 113 | 80 |
| 6.4 | 112 | 78 |
| 4.8 | 104 | 60 |

| English E) Word Attack | | |
|-------------------------------|---------------------|-------------------|
| Grade-Equivalent | Scaled Score | Percentile |
| 5.7 | 108 | 70 |
| 3.2 | 97 | 42 |
| 10.2 | 119 | 90 |
| 5.7 | 109 | 72 |
| 1.7 | 82 | 11 |
| 2.1 | 87 | 20 |
| 3.6 | 100 | 50 |
| 4.9 | 105 | 63 |
| 3.6 | 99 | 47 |
| 3.2 | 97 | 42 |
| 4.1 | 102 | 55 |
| 4.1 | 102 | 57 |
| 3.6 | 99 | 47 |
| 5.7 | 108 | 70 |
| 8.1 | 115 | 84 |
| 4.1 | 102 | 57 |
| 4.6 | 102 | 55 |

| Math A) Applied Problems | | |
|---------------------------------|---------------------|-------------------|
| Grade-Equivalent | Scaled Score | Percentile |
| 4.6 | 106 | 66 |
| 0.8 | 63 | 1 |
| 4.6 | 108 | 70 |
| 2.3 | 84 | 15 |
| 2.8 | 90 | 26 |
| 1.6 | 75 | 5 |
| 2.0 | 82 | 12 |
| 5.0 | 110 | 74 |
| 3.6 | 98 | 45 |

| | | |
|------------|-----------|-----------|
| 2.3 | 84 | 15 |
| 3.1 | 92 | 31 |
| 4.2 | 105 | 63 |
| 3.9 | 101 | 53 |
| 4.6 | 106 | 66 |
| 5.5 | 112 | 78 |
| 3.9 | 102 | 56 |
| 3.4 | 95 | 42 |

| Math B) Calculation | | |
|----------------------------|---------------------|-------------------|
| Grade-Equivalent | Scaled Score | Percentile |
| 3.8 | 99 | 47 |
| 5.3 | 113 | 81 |
| 4.3 | 106 | 64 |
| 4.0 | 103 | 58 |
| 3.5 | 98 | 45 |
| 2.2 | 82 | 12 |
| 2.2 | 82 | 12 |
| 4.3 | 105 | 62 |
| 4.6 | 107 | 68 |
| 2.9 | 91 | 27 |
| 2.6 | 85 | 16 |
| 3.3 | 96 | 39 |
| 3.3 | 95 | 36 |
| 3.8 | 99 | 47 |
| 4.3 | 104 | 60 |
| 4.3 | 106 | 64 |
| 3.7 | 98 | 46 |

**5th Grade
Woodcock Johnson IV, Achievement Results, 2024**

| English A) Letter-Word Identification | | |
|--|---------------------|-------------------|
| Grade-Equivalent | Scaled Score | Percentile |
| 4.9 | 102 | 55 |
| 4.3 | 92 | 31 |
| 7.1 | 207 | 69 |
| 5.3 | 98 | 46 |
| 4.9 | 96 | 39 |
| 5.7 | 100 | 50 |
| 4.6 | 94 | 34 |
| 4.1 | 90 | 25 |
| 6.1 | 103 | 57 |
| 7.7 | 109 | 73 |
| 4.9 | 95 | 38 |
| 6.6 | 104 | 62 |
| 4.9 | 95 | 38 |
| 3.6 | 86 | 18 |
| 5.3 | 105 | 45 |

| English B) Spelling | | |
|----------------------------|---------------------|-------------------|
| Grade-Equivalent | Scaled Score | Percentile |
| 4.2 | 96 | 40 |
| 3.3 | 82 | 12 |
| 3.7 | 86 | 18 |
| 3.7 | 86 | 18 |
| 6.1 | 102 | 56 |
| 3.7 | 85 | 17 |
| 6.5 | 84 | 14 |
| 2.5 | 74 | 4 |
| 4.4 | 92 | 29 |
| 4.0 | 87 | 20 |
| 3.5 | 83 | 13 |
| 4.9 | 95 | 36 |
| 3.5 | 83 | 13 |
| 2.7 | 76 | 5 |
| 4.1 | 87 | 21 |

| English C) Passage Comprehension | | |
|---|---------------------|-------------------|
| Grade-Equivalent | Scaled Score | Percentile |
| 5.7 | 105 | 63 |
| 6.3 | 103 | 59 |
| 7.8 | 110 | 74 |
| 7.8 | 110 | 74 |
| 5.7 | 100 | 49 |
| 7.0 | 106 | 65 |
| 6.3 | 103 | 57 |
| 7.0 | 106 | 65 |
| 7.0 | 106 | 67 |
| 10.0 | 115 | 85 |
| 5.1 | 96 | 40 |
| 7.8 | 109 | 73 |
| 7.0 | 105 | 64 |
| 4.5 | 94 | 34 |
| 6.8 | 105 | 62 |

| English D) Writing Samples | | |
|-----------------------------------|---------------------|-------------------|
| Grade-Equivalent | Scaled Score | Percentile |
| 5.8 | 104 | 61 |
| 5.8 | 101 | 52 |
| 10.6 | 114 | 82 |
| 8.8 | 111 | 76 |
| 7.9 | 107 | 69 |
| 5.8 | 100 | 51 |
| 8.8 | 110 | 75 |
| 13.0 | 117 | 87 |
| 13.0 | 117 | 88 |
| 6.4 | 103 | 57 |
| 7.1 | 105 | 62 |
| 6.4 | 103 | 57 |
| 5.2 | 98 | 44 |
| 6.4 | 103 | 57 |
| 7.9 | 107 | 66 |

| English E) Word Attack |
|-------------------------------|
|-------------------------------|

| Grade-Equivalent | Scaled Score | Percentile |
|------------------|--------------|------------|
| 4.9 | 101 | 52 |
| 8.1 | 108 | 69 |
| 8.1 | 108 | 69 |
| 4.1 | 95 | 37 |
| 6.7 | 104 | 59 |
| 5.7 | 100 | 50 |
| 8.1 | 107 | 68 |
| 8.1 | 108 | 69 |
| 8.1 | 107 | 68 |
| 5.7 | 100 | 50 |
| 4.9 | 97 | 42 |
| 6.7 | 104 | 59 |
| 5.7 | 100 | 50 |
| 4.9 | 97 | 43 |
| 6.4 | 103 | 56 |

| Math A) Applied Problems | | |
|---------------------------------|--------------|------------|
| Grade-Equivalent | Scaled Score | Percentile |
| 6.0 | 108 | 70 |
| 5.0 | 97 | 41 |
| 5.0 | 97 | 41 |
| 7.6 | 108 | 71 |
| 6.7 | 105 | 62 |
| 3.1 | 79 | 8 |
| 6.7 | 105 | 62 |
| 7.6 | 108 | 69 |
| 5.0 | 97 | 41 |
| 5.5 | 99 | 47 |
| 2.8 | 75 | 5 |
| 6.7 | 105 | 62 |
| 5.0 | 96 | 39 |
| 4.6 | 93 | 33 |
| 5.5 | 98 | 47 |

| Math B) Calculation | | |
|----------------------------|--------------|------------|
| Grade-Equivalent | Scaled Score | Percentile |
| 5.7 | 105 | 63 |

| | | |
|------------|------------|-----------|
| 6.2 | 104 | 61 |
| 6.6 | 107 | 69 |
| 6.6 | 107 | 69 |
| 6.2 | 103 | 59 |
| 5.3 | 97 | 43 |
| 6.2 | 103 | 59 |
| 5.0 | 95 | 36 |
| 5.3 | 98 | 45 |
| 6.2 | 103 | 59 |
| 5.0 | 94 | 35 |
| 6.6 | 107 | 67 |
| 7.7 | 112 | 79 |
| 5.7 | 100 | 51 |
| 6.0 | 103 | 57 |

THE
CHANDLER
SCHOOL



August 29, 2024

For the 23-24 school year the following standardized tests were administered:

- Stanford 10 – K-8
- OLSAT – 1st, 3rd, 5th, and 7th graders

*We are reporting the mean reading and math scores from the Stanford 10 for our 3rd, 7th and 8th grade groups because they are the only groups with 10 or more students.

| Stanford 10 Mean Results | | |
|---------------------------------|--|---|
| | Total Reading Mean National (NCE) | Total Math Mean National (NCE) |
| 3rd grade | 36.5 | 27.9 |
| 7th grade | 42.1 | 27.6 |
| 8th grade | 44.2 | 32.5 |

Please let us know if you have any questions regarding this information.

Sincerely,

Dana K. Blackhurst

Head of School

Document C
Assessment Data

Educational Credit for Exceptional Needs Children (ECENC) Program

2023-24

Independent School Name: Trident Academy

A school applying for participation in the ECENC Program must provide directly to the EOC by **September 1** the following:

School-level Assessment Results

In the chart below, please list the **NAME** of each national achievement test that was administered and the **grade** in which the test is administered for the prior school year. Examples include: *TerraNova, Stanford 10, Iowa Test of Basic Skills, MAP, PSAT, SAT, ACT, etc.*

For schools that specifically exist to meet the needs of only exceptional needs students with documented disabilities, please document how the school documents students' academic and social development.

| Grade | English language arts (Reading) | Mathematics | Other |
|--------------|--|--------------------|--------------|
| 2-12 | Gates MacGinitie | | |
| 2-12 | | GMADE | |
| 1-12 | | WRAT | |
| | | | |
| | | | |

For each national assessment listed above and for each grade with at least 10 students tested, please attach the results from the prior school year. The manual provides a template for schools to use in reporting mean scale scores, national percentile rankings, etc.

The individual submitting school-level assessment information must sign below.

Signature: Betsy A. Fanning

Date: **September 1, 2023**

Print Name of Signature Above: **Betsy A. Fanning**

Title: **Head of School**

Email: **bfanning@tridentacademy.com**

Document C
Assessment Data
Trident Academy
2022-2023 SY

Trident Academy will comply with the ECENC Reporting Requirement to the EOC for School Assessment Data for grades 3 and 4, our only grades with over 10 students. See the attached document with summary scores for our 3rd and 4th grades.

Trident Academy used several nationally normed assessments to monitor progress in ELA (Reading) and mathematics for SY 2022-23.

MATHEMATICS ASSESSMENTS:

During the 2022-2023 school year, our students' GMADE (Group Mathematics Assessment and Diagnostic Evaluation) average test scores increased by 27% over the course of the year.

During the 2022-2023 school year, our students' WRAT (Wide Range Achievement Test) Math average test scores increased by 8% over the course of the year.

ELA ASSESSMENT:

During the 2022-2023 school year, our students' Gates-MacGinitie Vocabulary average test scores increased by 26% over the course of the year.

During the 2022-2023 school year, our students' Gates-MacGinitie Comprehension average test scores increased by 33% over the course of the year.

During the 2022-2023 school year, our students' Gates-MacGinitie Total average test scores increased by 27% over the course of the year.

Trident Academy
Grade Level Testing Summary
2022-2023 SY

| THIRD GRADE | MEAN STANINE | MEAN %ILE | MEAN GSV |
|--|-----------------|-----------|----------|
| NAME OF TEST | PRE/POST | PRE/POST | PRE/POST |
| Gates MacGinitie Vocabulary | 3/3 | 14/25 | |
| Gates MacGinitie Comprehension | 3/3 | 15/19 | |
| Gates MacGinitie Total | 3/3 | 14/21 | |
| Wide Range Achievement Math WRAT | | 7/26 | 457/475 |
| Group Mathematics Assessment and Diagnostic Evaluation | 2/4 | 9/27 | 479/487 |

| FOURTH GRADE | MEAN STANINE | MEAN %ILE | MEAN GSV |
|--|-----------------|-----------|----------|
| NAME OF TEST | PRE/POST | PRE/POST | PRE/POST |
| Gates MacGinitie Vocabulary | 3/4 | 24/27 | |
| Gates MacGinitie Comprehension | 3/4 | 18/31 | |
| Gates MacGinitie Total | 3/4 | 19/27 | |
| Wide Range Achievement Math WRAT | | 9/21 | 474/485 |
| Group Mathematics Assessment and Diagnostic Evaluation | 2/4 | 10/25 | 486/492 |